

Yale

SIEVERT

CRANE & HOIST

DIVISION OF SIEVERT ELECTRIC

Authorized Sales and Service

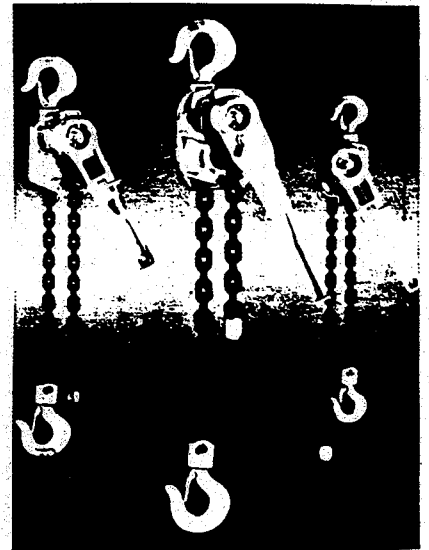
(708) 771-1600

parts@sievertelectric.com

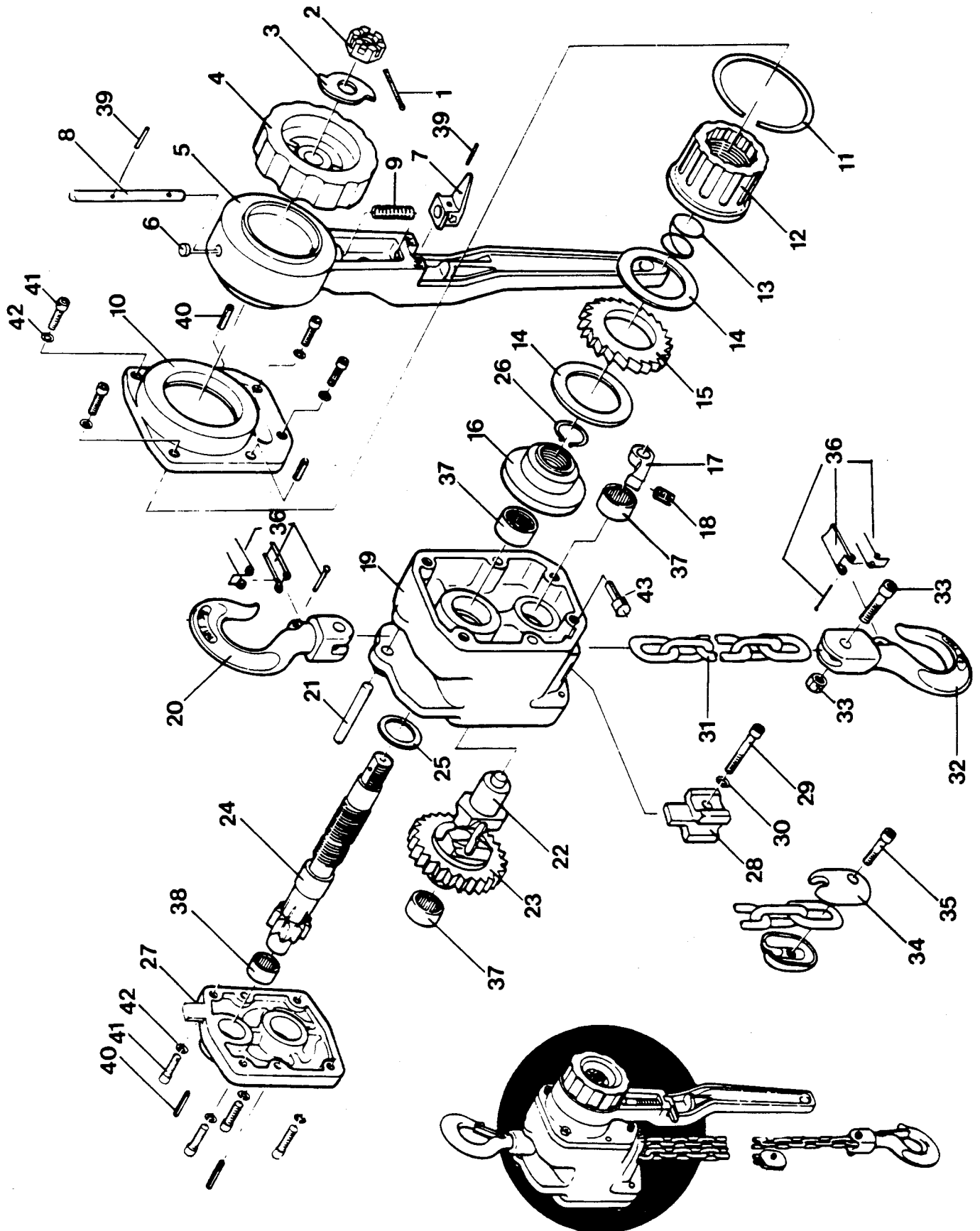
www.sievertcrane.com

Ratchet Lever Chain Hoist • Model PM

Spare Parts Catalog



RATCHET LEVER CHAIN HOIST - MODEL PM1500 / PM2000
 1500/2000 LBS. CAPACITY



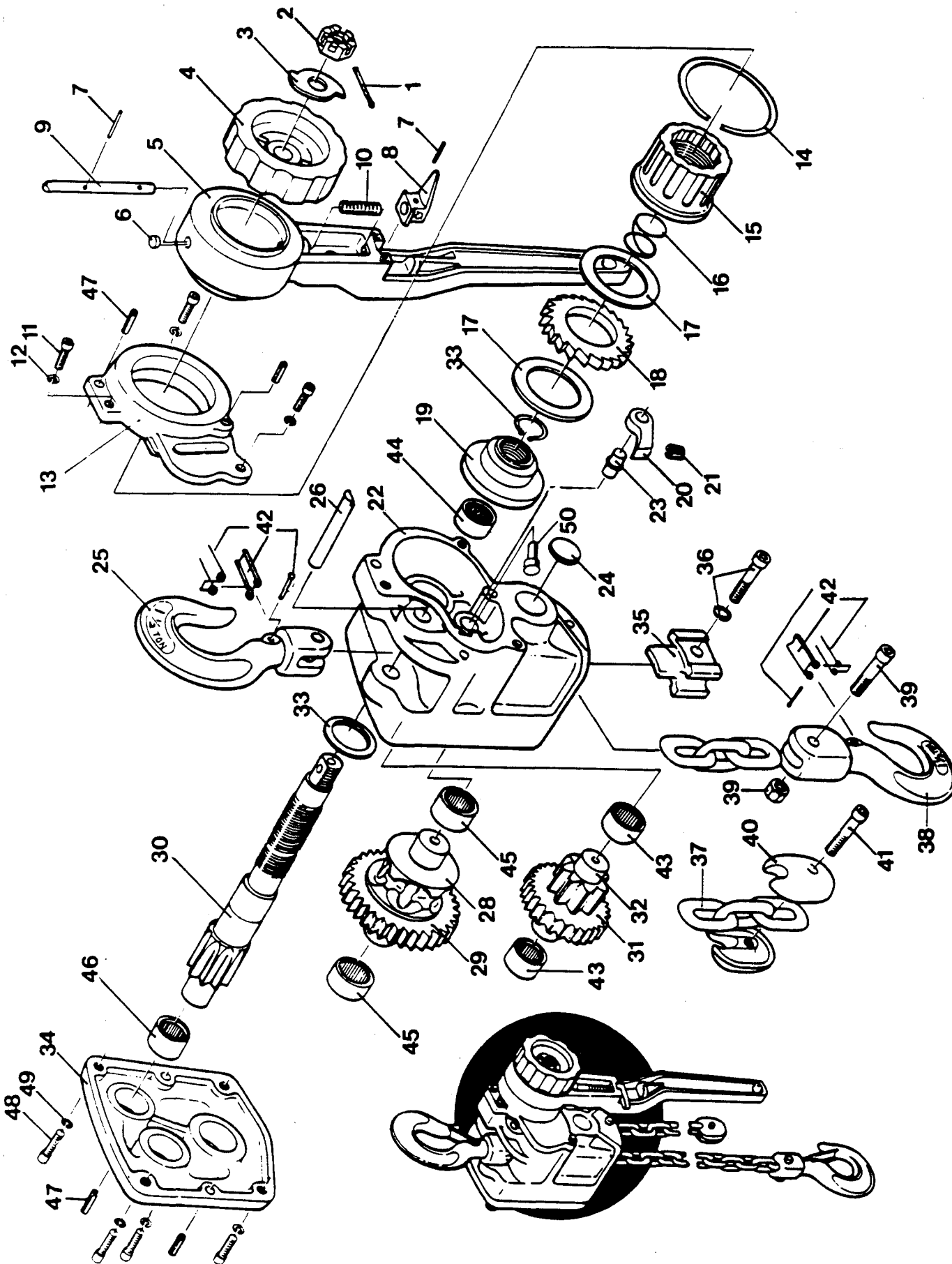
**RATCHET LEVER CHAIN HOIST - MODEL PM1500 / PM2000
1500/2000 LBS. CAPACITY**

Yale

ITEM NO.	PART NO.	DESCRIPTION	NO OF
1	446 005 700	Cotter pin	1
2	446 005 701	Slotted nut	1
3	446 005 702	Check washer	1
4	446 005 703	Handwheel	1
5	446 005 704	Lever	1
6	446 005 705	Plug	1
7	446 005 706	Lever	1
8	446 005 707	Rod	1
9	446 005 708	Spring	1
10	446 005 709	Housing	1
11	446 005 711	Ring	1
12	446 005 712	Ratchet	1
13	446 005 713	Spring	1
14	446 005 714	Raybestos disc	2
15	446 005 715	Ratchet disc	1
16	446 005 716	Disc hub	1
17	446 005 717	Brake pawl	1
18	446 005 718	Spring	1
19	446 005 719	Housing	1
20	446 005 758	Top hook 1000 kg	1
20	446 005 720	Top hook 750 kg	1
21	446 005 721	Pin	1
22	446 005 722	Chain sheave	1
23	446 005 723	Gear	1
24	446 005 724	Drive gear	1
25	446 005 725	Spacer	1
26	446 005 726	Snap ring	1
27	446 005 727	Cover	1
28	446 005 728	Stripper	1
29	446 005 729	Screw	1
30	446 005 730	Lockwasher	1
31	446 005 731	Chain	1
32	446 005 759	Bottom hook 1000 kg	1
32	446 005 732	Bottom hook 750 kg	1
33	446 005 733	Screw with nut	1
34	446 005 734	Chain stop	1
35	446 005 735	Screw	1
36	446 005 756	Hook latch kit	2
37	446 005 806	Bearing	3
38	446 005 808	Bearing	1
39	449 034 102	Roll pin	2
40	449 034 027	Roll pin	1
41	449 002 064	Screw	6
42	449 020 006	Spring washer	6
43	446 005 809	Pin	1

When Replacement Parts Are Needed, Order Only Yale® Factory Engineered Parts

RATCHET LEVER CHAIN HOIST - MODEL PM3000
3000 LBS. CAPACITY



**RATCHET LEVER CHAIN HOIST - MODEL PM3000
3000 LBS. CAPACITY**

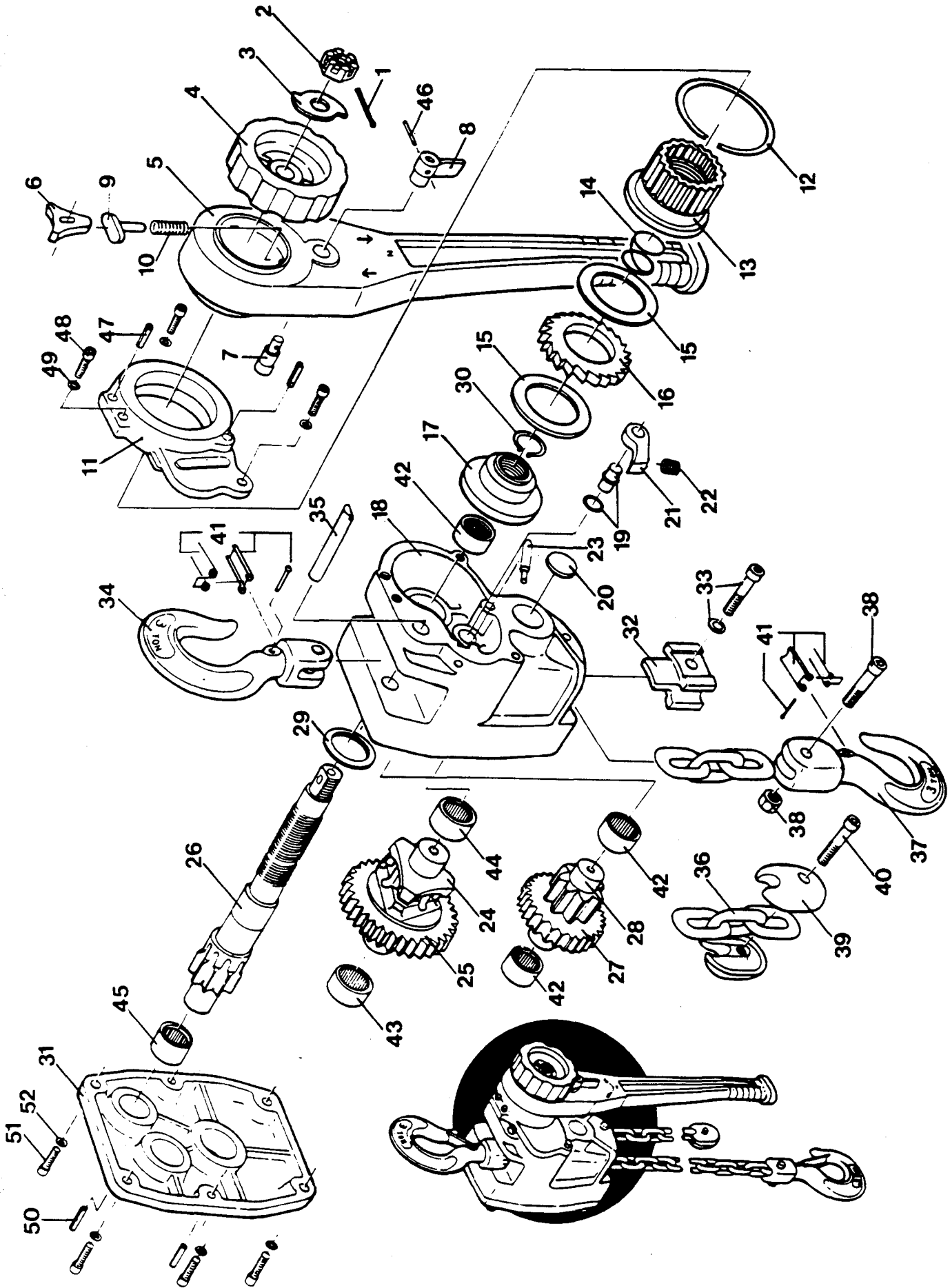


ITEM NO.	PART NO.	DESCRIPTION	NO OF
1	446 005 700	Cotter pin	1
2	446 005 701	Slotted nut	1
3	446 005 702	Check washer	1
4	446 005 703	Handwheel	1
5	446 005 704	Lever	1
6	446 005 705	Plug	1
7	449 034 102	Roll pin	1
8	446 005 706	Lever	1
9	446 005 707	Rod	1
10	446 005 708	Spring	1
11	449 002 064	Screw	3
12	449 020 006	Lockwasher	3
13	446 005 710	Cover	1
14	446 005 711	Ring	1
15	446 005 712	Ratchet	1
16	446 005 713	Spring	1
17	446 005 714	Raybestos disc	2
18	446 005 715	Ratchet disc	1
19	446 005 716	Disc hub	1
20	446 005 717	Brake pawl	1
21	446 005 718	Spring	1
22	446 005 736	Housing	1
23	446 005 737	Pin	1
24	446 005 738	Cover	1
25	446 005 739	Hook	1
26	446 005 740	Pin	1
27	446 005 741	Screw	1
28	446 005 742	Load sheave	1
29	446 005 743	Gear	1
30	446 005 744	Drive pinion	1
31	446 005 745	Gear	1
32	446 005 746	Gear	1
33	446 005 747	Spacer and snap ring	1
34	446 005 748	Cover	1
35	446 005 749	Stripper	1
36	446 005 750	Screw assy.	1
37	446 005 751	Chain	1
38	446 005 752	Hook	1
39	446 005 753	Screw assy.	1
40	446 005 754	Chain stop	1
41	446 005 755	Screw	1
42	446 005 757	Safety latch kit	2
43	446 005 802	Bearing	2
44	446 005 806	Bearing	1
45	446 005 807	Bearing	2
46	446 005 808	Bearing	1
47	449 034 027	Roll pin	2
48	449 002 054	Screw	4
49	449 020 001	Lockwasher	4
50	446 005 810	Pin	1

When Replacement Parts Are Needed, Order Only Yale® Factory Engineered Parts

For more information contact: Sievert Crane and Hoist, (708) 771-1600, parts@sievertelectric.com, www.sievertcrane.com

RATCHET LEVER CHAIN HOIST - MODEL PM6000
6000 LBS. CAPACITY



**RATCHET LEVER CHAIN HOIST - MODEL PM6000
6000 LBS. CAPACITY**

Yale

ITEM NO.	PART NO.	DESCRIPTION	NO OF
1	446 005 760	Cotter pin	1
2	446 005 761	Slotted nut	1
3	446 005 762	Check washer	1
4	446 005 763	Handwheel	1
5	446 005 764	Lever	1
6	446 005 765	Ratchet pawl	1
7	446 005 766	Pin	1
8	446 005 767	Lever	1
9	446 005 768	Spring rod	1
10	446 005 769	Spring	1
11	446 005 770	Cover	1
12	446 005 771	Ring	1
13	446 005 772	Ratchet	1
14	446 005 773	Spring	1
15	446 005 774	Raybestos disc	2
16	446 005 775	Ratchet disc	1
17	446 005 776	Disc hub	1
18	446 005 777	Housing	1
19	446 005 778	Stud and washer	1
20	446 005 779	Cover	1
21	446 005 780	Pawl	1
22	446 005 781	Spring	1
23	446 005 782	Pin	1
24	446 005 783	Chain sheave	1
25	446 005 784	Gear	1
26	446 005 785	Drive pinion	1
27	446 005 786	Gear	1
28	446 005 787	Gear	1
29	446 005 788	Spacer	1
30	446 005 789	Snap ring	1
31	446 005 790	Cover	1
32	446 005 791	Stripper	1
33	446 005 792	Screw assy.	1
34	446 005 793	Hook	1
35	446 005 794	Pin	1
36	446 005 795	Chain	1
37	446 005 796	Hook	1
38	446 005 797	Screw assy.	1
39	446 005 798	Chain stop	1
40	446 005 799	Screw	1
41	446 005 801	Safety latch kit	2
42	446 005 803	Bearing	3
43	446 005 804	Bearing	1
44	446 005 805	Bearing	1
45	446 005 802	Bearing	1
46	449 034 102	Roll pin	1
47	449 034 027	Roll pin	2
48	449 002 064	Screw	3
49	449 020 006	Lockwasher	3
50	449 034 054	Roll pin	2
51	449 002 142	Screw	4
52	449 022 031	Lockwasher	4

When Replacement Parts Are Needed, Order Only Yale[®] Factory Engineered Parts