

# **SIEVERT**

## **CRANE & HOIST**

### **DIVISION OF SIEVERT ELECTRIC**



Sievert Crane & Hoist is proud to offer customers all over the world a wide range of manufacturers to deliver the best products at the best prices, making Sievert the one stop shop for all your crane & hoist needs. We are the authorized dealers of lifting equipment, parts and accessories for the following (but not limited to):

#### **HOISTS**

Acco Lifting  
Budgit  
Chester  
Coffing  
Columbus McKinnon  
David Round  
Demag  
Detroit  
Electrolift  
Harrington  
Ingersoll-Rand  
Robbins & Myers (R&M)  
Shaw-Box  
Stahl  
Whiting  
Yale

#### **CRANES**

Sievert Crane & Hoist  
Abell Howe  
Acco  
Contrx  
Gorbel Systems  
Handling System  
Harrington  
Robbins & Myers  
Spanco Systems  
Thern Davit Cranes  
Trambeam

#### **ELECTRICAL & CONTROLS**

Conductix  
Drivecon  
Duct-O-Bar  
Electromotive  
Power Electronics  
Remtron  
Telemotive

For all your lifting needs including New Equipment, Parts, Accessories, Refurbishment, Crane Inspection and Service please contact us at:

#### **NEW EQUIPMENT SALES**

1230 S. Hannah Avenue,  
Forest Park, IL 60130  
sales@sievertelectric.com  
Office: (708) 771-1600  
Mobile: (708) 878-2231  
Fax: (708) 405-5180

#### **PARTS**

1230 S. Hannah Avenue,  
Forest Park, IL 60130  
parts@sievertelectric.com  
Office: (708) 771-1600 ext. 647  
Direct: (708) 435-5008  
Fax: (708) 435-5018

#### **SERVICE, REFURB & INSPECTION**

1230 S. Hannah Avenue,  
Forest Park, IL 60130  
service@sievertelectric.com  
Office: (708) 405-5154  
Mobile: (708) 878-2226  
Fax: (708) 405-5174

# Rigid Mount Trolley



- Designed especially for use with lug suspended BEHC, 6000 Series, 2200 Series and USA Models.
- Ideal for low head room applications where distance from floor to I-beam is limited.
- Trolley side plates are of all-steel construction providing maximum strength.
- Wheels have hardened dual treads ensuring long life and operate on ball bearings for easy travel. Pressure fittings are provided in wheel axels to simplify lubrication.
- Dual treads allow trolley to run on both I-beam and width flange type beam applications. Optional patented type wheels available for patented track systems.
- Hand-gearred models, the hand chain operated wheel turns a pinion which meshes with steel gears for ease of operation and accurate spotting. Chain guide provided to ensure chain alignment with wheel.
- Anti-tilt rollers are provided on hand-gearred trolleys to eliminate the tilting of trolley on beam when operating with a light load or without a load.
- Optional safety drop stops and bumpers available.
- Spark resistant models available, heavy duty rigid mount trolleys.

## Specifications & Dimensions

Capacity	Push Trolley		Hand Geared*		Flange widths	Min. Beam Depth**	Min. Radius Curve	A	B	C	D	WD	F Max.†	G Dia.	H	J Max.	M Max.	N
	Model #	Net Weight	Model #	Net weight														
tons		lbs.		lbs.	in	in	in	in	in	in	in	in	in	in	in	in	in	in
<b>Rigid Mount Trolleys</b>																		
1/4 & 1/2	905401	15	-	-	2-5/8 to 4-5/8 <sup>§</sup>	4	2' 6"	4-3/8	2-5/8	3-3/16	11/16	3-1/8	1-5/8	5/8	8-1/8	3-11/16	-	3-1/8
	905402	23	-	-	3 to 5	5	3' 6"	6-1/8	2-9/16	3-7/8	11/16	4	1-7/8	5/8	8-7/8	5	-	3-1/8
	905405	24	-	-	5-1/4 to 7-3/8										11-1/8		-	
	-	-	905411	40	3 to 5										8-7/8		9-3/4	
	-	-	905413	41	5-1/4 to 7-3/8										11-1/8		11-1/8	
2	905403	43	905412	57	3-3/8 to 6	6	5' 0"	6-7/8	3-13/16	4-7/16	1	4-15/16	2	1	10-1/8	5-13/16	10-1/4	5
	905406	44	905414	58	6-1/4 to 8-7/8										13		11-7/8	
3	905404	50	905417	65	3-3/8 to 6	6	5' 0"	6-7/8	4-3/16	5-3/4	1-3/8	4-15/16	3-1/4	1-1/4	12-3/4	5-13/16	18-3/8	6
	905407	52	905418	67	6-1/8 to 8-7/8										15-3/4		19-7/8	
	905408	54	905419	69	9 to 11										17-7/8		21-1/8	
<b>Heavy Duty Rigid Mount Trolleys</b>																		
1	900211	35	900261	50	3 to 5	6	3' 0"	7-5/8	3	3-7/8	3/4	4	1-7/8	5/8	8-7/8	4-7/8	10-9/16	3-1/8
	900212	38	900262	53	5-1/8 to 7-1/4										11-1/4		11-11/16	
	900213	41	900263	56	7-1/2 to 9-1/8										12-3/4		12-5/8	
2	900221	45	900271	60	3-3/8 to 6	6	5' 0"	9-1/8	3	4-1/8	1-5/16	4	2-1/8	1	9-1/2	4-7/8	10-1/16	5
	900222	48	900272	63	6-1/4 to 8-5/8										12-1/8		11-3/8	
	900223	51	900273	66	8-7/8 to 11-1/4										14-3/4		12-11/16	
3	900231	55	900281	70	4 to 6-1/4	6	5' 0"	9-1/8	3-1/4	4-1/2	1-3/8	4	2-1/2	1-1/4	12	4-7/8	16-1/2	6
	900232	58	900282	73	6-3/8 to 8-5/8										14-3/8		17-11/16	
	900233	62	900283	77	8-3/4 to 11										16-3/4		18-7/8	

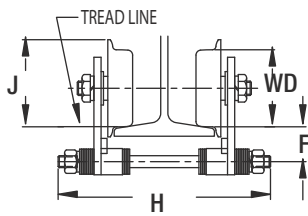
\* Hand-gearred trolleys have standard hand chain drop of 9'-6". Longer chain available.

\*\* When used on smallest I-Beam size, beam must be free of all obstructions such as clips, suspension bolts and nuts.

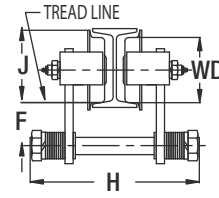
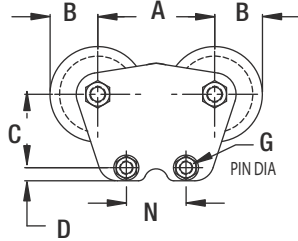
§ For 1/4 and 1/2 ton applications on wider flange beams, mount on 1 ton trolleys.

¥ Dimension "F" is based on largest size beam on which trolley will operate. Dimension increases slightly for each of the smaller beam sizes.

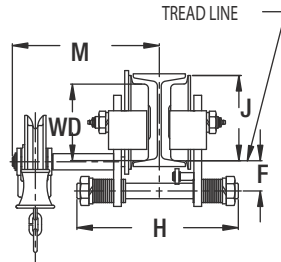
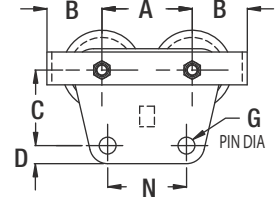
**Rigid Mount Trolleys**



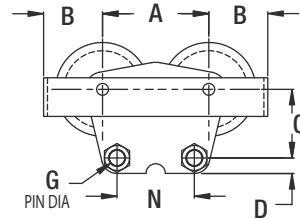
**Push Trolley 1/4, 1/2 & 1 ton**



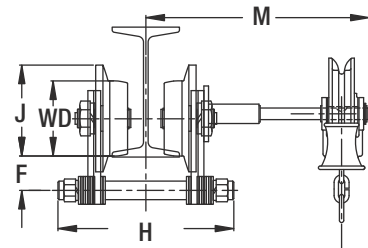
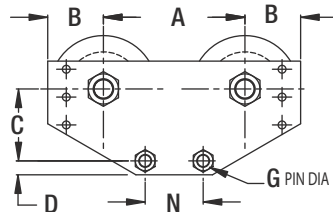
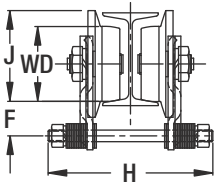
**Push Trolley 2 & 3 ton**



**Hand-Gear Trolley 1/2, 1, 2 & 3 ton**



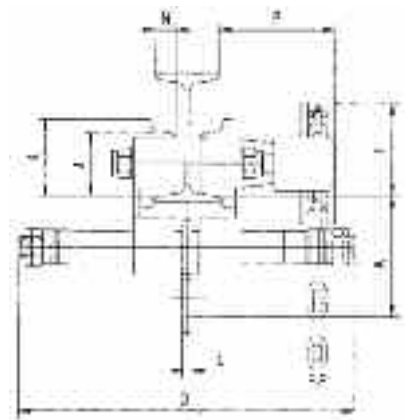
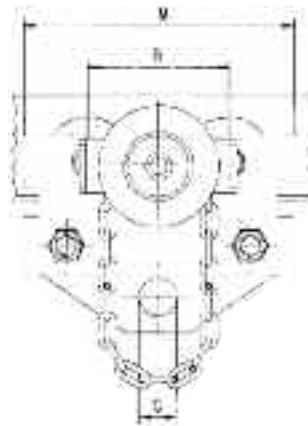
**Heavy Duty Rigid Mount Trolleys**



# Hook Suspension Trolleys



- Capacities from 1/4 to 5 ton (metric rated).
- Trolley sides are of all-steel construction for maximum strength
- Wheels are steel with hardened treads and roller bearings for easy traversing and long life
- Self aligning frames keep the load equally distributed, and are adjustable to fit several sizes of beams
- Wrap-around side plates provide built in drop stops to increase operator safety and act as a bumper to protect wheels
- Push trolleys are an economical alternative for low duty cycle, lighter capacity applications with lifts under 20 feet
- Hand geared trolleys are designed for applications requiring close control of horizontal movement of the hoist and its load
- Hand geared trolleys are deal for those applications where an operator shouldn't be near or touch the load to move or position it



## Specifications & Dimensions

Capacity*	Model # **	Standard Beam Height	I-Beam Width	Min. Radius Curve	Wheel Tread Diameter							(CBTG)							Net Weight
						A	B	C	D	F	J	K	K	L	M	N	P	lbs.	
tons		in	in	in	in	in	in	in	in	in	in	in	in	in	in	in	in	in	in
<b>Push Trolley</b>																			
1/4	CBTP-0025	4 to 24	2.0 to 8.7	27	2.36	3.94	3.54	1.18	11.81	-	2.36	2.83	-	0.31	7.56	0.71	-	-	19
1/2	CBTP-0050	4 to 24	2.0 to 8.7	27	2.36	3.94	3.54	1.18	11.81	-	2.36	2.83	-	0.31	7.56	0.71	-	-	19
1	CBTP(G)-0100	5 to 24	2.3 to 8.7	36	2.36	4.33	5.12	1.38	12.20	3.60	2.36	2.83	3.03	0.31	9.84	0.71	4.33	4.33	26
1-1/2	CBTP(G)-0150	6 to 24	2.3 to 8.7	45	3.15	5.12	5.91	1.89	12.60	3.56	3.15	3.78	3.86	0.47	11.81	0.79	4.33	4.33	46
2	CBTP(G)-0200	6 to 24	2.3 to 8.7	45	3.15	5.12	5.91	1.89	12.60	3.56	3.15	3.78	3.86	0.47	11.81	0.79	4.33	4.33	46
3	CBTP(G)-0300	8 to 24	3.0 to 8.7	55	4.41	6.18	7.09	2.36	13.39	4.23	4.41	5.20	5.24	0.55	14.57	1.14	4.33	86	
5	CBTP(G)-0500	10 to 24	3.5 to 8.7	70	4.92	7.09	8.23	2.76	13.78	5.89	4.92	5.63	5.87	0.79	17.32	1.26	4.33	130	

\* Metric rated

\*\* When ordering specify "P" for plain trolley or "G" for geared trolley

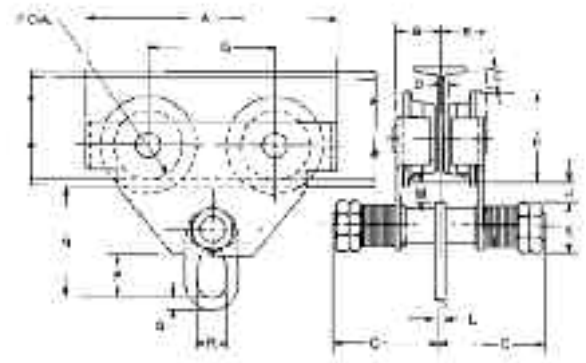
## Series 633 Ball Bearing Trolley



- Rugged steel side plates formed to include bumpers and trolley guards
- Frames connected by steel equalizer pin, secured by two nuts on each side
- Universal tread flanged trackwheels equipped with shielded ball bearings
- Easy rolling on American standard shaped, wide flange shapes or patented rail
- Hardened wheels and axles for added strength and durability
- Spacer washers can be shifted inside or outside for easy adjustment to wide range of beams
- To be used with hook suspended hoists
- Suspension plate for easy attachment is standard
- Bearings pre-packed with lifetime lubricant
- One-year warranty

### Specifications & Dimensions

Capacity	Model #	Depth	Flange Width	Tread Dia. Of Wheels	Min. Curve Rad.	Net Weight
tons		in	in	in	in	in
1/2	922085	3-15	2-1/2 to 5-5/8	2-9/32	35	17
1	922086	5-24	3 to 8	3-15/32	35	35
2	922087	6-24	3-5/8 to 8	3-15/16	59	53
3	922088	8-24	4 to 8	5-1/8	71	101
5	922089	10-24	4-5/8 to 8	6-1/8	94	145



Capacity	Model #	A	B	C	D	E	F	G	H	J	K	L	M	N	P	Q	R
tons		in	in	in	in	in	in	in	in	in	in	in	in	in	in	in	in
1/2	922085	8-1/2	2-5/32	5-1/16	1/16	-1/4	2-9/32	4	3	1-1/32	1-3/4	1/2	15/16	4-3/32	1-7/32	19/32	31/32
1	922086	10-13/16	2-13/32	6-9/16	7/16	11/32	3-15/32	4-7/8	4-11/32	1-1/32	2-3/32	1/2	31/32	5-1/16	1-3/4	19/32	1-5/32
2	922087	12-7/32	2-11/16	6-25/32	13/32	25/32	3-15/16	5-1/2	4-29/32	25/32	2-1/2	5/8	11/16	5-13/16	2-5/32	13/16	1-5/8
3	922088	14-13/16	3-1/16	7-13/32	1/2	1-7/16	5-1/8	6-9/16	6-1/8	1-3/16	3-13/32	5/8	15/16	7-7/16	2-9/16	1-3/8	1-31/32
5	922089	18-1/8	3-21/32	8	9/16	2-3/16	6-1/8	7-7/8	7-9/32	2-1/8	3-13/32	13/16	1-7/16	9-15/16	3-23/32	1-25/32	2-9/16

# Hook Suspension Trolleys



## Series 632 Close Radius Trolley

- Negotiates radius curves as tight as 7"
- Made of the highest quality rolled steel
- Unique double row, ball bearing wheel design provides five times greater wear capacity
- Larger V-bars available for wider flange adjustment
- For low headroom applications
- Bearings pre-packed with lifetime lubricant
- Exclusive Dial-Fit collar quickly adapts trolley to a wide range of beams and patented rails
- Dust covers shield and protect bearings
- Trolleys available for larger beams, rails and tracks; contact factory
- Cast iron trolley guards available (except for 3 ton)
- Lifetime Warranty

### A Compact Close Radius Trolley

With revolutionary advances, this shorter, more compact trolley is 50% lighter than competitive trolleys, yet every bit as tough.

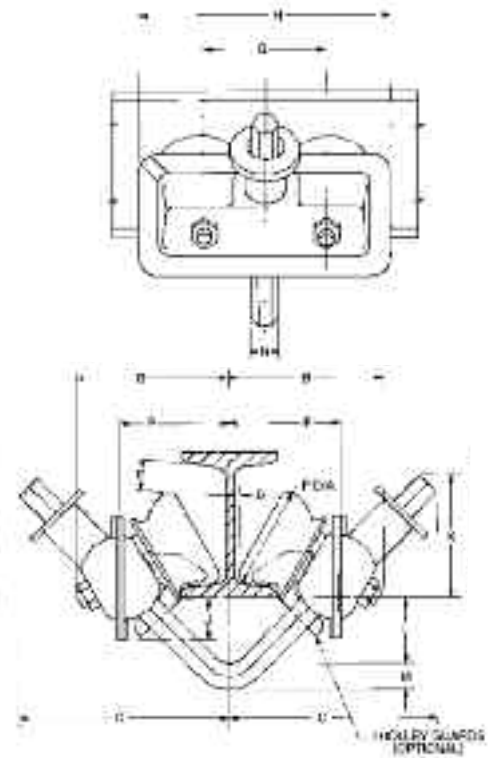
## Specifications & Dimensions

Capacity*	Model #	Adj. for standard S-beam		Tread diameter	Net weight	Ship Weight	Min. Radius Curve
		Depth of Beam	Flange width				
tons		in	in	in	lbs	lbs	in
1/4 & 1/2	B3222	4-12	2-5/8 to 5-1/16	2-3/4	9	11	7
1	B3224	4-12	2-5/8 to 5-1/16	2-3/4	10	12	7
1-1/2 & 2	B3226	6-15	3-3/8 to 5-5/8	3-1/2	23	25	10
3	B3230	8-18	4 to 6-1/4	3-1/2	29	32	10

Capacity**	Model #	B	C	D	E	F	G	H	J	K	L	M	N	P	Q	R
tons		in	in	in	in	in	in	in	in	in	in	in	in	in	in	in
1/4 & 1/2	B3222	4-1/4	5-7/8	3/16	13/16	2-3/4	3-3/8	7	1-1/8	3-3/8	1-13/16	11/16	7/8	3	-	-
1	B3224	4-3/8	6	3/16	13/16	2-3/4	3-3/8	7	1-1/8	3-1/2	1-5/8	7/8	1	3-1/8	-	-
1-1/2 & 2	B3226	5-5/8	7-1/2	3/8	2-3/16	3-1/2	4-1/2	9	1-1/2	4-3/8	2	1-1/8	1-1/4	3-7/8	-	-
3	B3230	6-3/16	8-1/16	11/16	4-1/16	3-1/2	4-1/2	9	1-5/8	4-13/16	2-5/8	1-1/8	1-1/4	4-15/16	1/8	1-7/8

\* All capacities can be supplied for S-beams larger than listed and also for wide flange beams, rails or track with approximately equivalent flange widths

\*\* Dimensions given are for minimum S-beam and will vary with larger beams



## Push and Hand-Geared Trolleys



- Capacities 1/4 - 25 tons
- Heavy rolled steel side frames extend beyond the wheels providing superior strength and added protection for trackwheels
- Thick section steel clevis suspended from steel equalizer pin. Alloy steel axles and equalizer pins are heat treated for maximum strength and wear life.
- Trolley wheels are fully machined from alloy cast iron and hardened for high strength and long service life. Units 1/4 through 16 tons employ universal wheel treads for use on flat or tapered beam flanges. 25 ton model operates on American Standard I-beams with tapered flanges. For patented track, consult factory.
- Lifetime lubricated, precision ball bearings standard on units through 3 ton capacity. 4 ton trolleys and greater feature eight, sealed Timken, tapered roller bearings and grease fittings.
- On hand-gearred models, a hand chain operated wheel turns a machined steel drive pinion, engaging the two geared wheels.

## Specifications & Dimensions

Capacity tons	Model #		Beam Height in	Flange Width in	Minimum Radius Curve in	Net Weight lbs	
	Plain	Geared				Plain	Geared
1/4	1641-0025	1642-0025	4-12	2.66-5.00	20	23	38
1/2	1641-0050	1642-0050	4-12	2.66-5.00	20	23	38
1	1641-0100	1642-0100	5-12	3.00-6.00	24	43	62
1-1/2	1641-0150	1642-0200	5-12	3.00-6.00	24	45	65
2	1641-0200	1642-0300	6-18	3.33-6.25	30	67	90
3	1641-0300	1642-0400	6-18	3.33-6.25	30	70	93
4	1641-0400	1642-0500	8-24	4.00-7.00	36	155	184
5	1641-0500	1642-0600	8-24	4.00-7.00	36	160	188
6	1641-0600	1642-0800	8-24	4.00-7.00	36	160	188
8	1641-0800	1642-1000	10-24	4.62-8.00	60	300	347
10	1641-1000	1642-1200	10-24	4.62-8.00	60	310	360
12	1641-1200	1641-1600	10-24	4.62-8.00	60	310	360
16	1641-1600	1641-1600	18-24	6.00-8.00	96	800	895
20	1642-2000	1642-2000	18-24	6.00-8.00	96	845	955
25	1631-2500	1632-2500	18-24	6.00-8.00	120	1045	1200

Note: Wheels with convex treads are standard on all capacities 1/4 - 20, 20, 25, 30 and 40 ton trolleys can be furnished in tandem construction - Dimensions for 30 through 50 ton upon request. Dimensions shown are for minimum beam size and will vary proportionately for larger beams.

Capacity tons	A in	B in	C in	D in	E in	F in	G in	H in	I in	J in	K in	L in	M in	N in	O in	P in
1/4	11-1/2	6	1-7/8	4-7/8	7/8	1-3/4	2-3/4	6	-	7/8	4	2-7/8	1	1/4	2	4-1/8
1/2	11-1/2	6	1-7/8	4-7/8	7/8	1-3/4	2-3/4	6	-	7/8	4	2-7/8	1	1/4	2	4-1/8
1	13-1/4	6-3/4	2-1/4	5-3/8	1	1-3/4	3	6-1/8	-	1-1/8	5	3-3/4	1-1/4	1/4	1-3/4	4-3/4
1-1/2	13-1/4	6-3/4	2-1/4	5-3/8	1	2	3-1/4	6-1/8	-	1-1/8	5	3-3/4	1-1/4	3/8	1-3/4	4-3/4
2	15-5/8	7-5/8	2-5/8	6-3/4	1-1/8	2-1/8	3-5/8	6-1/8	-	1-1/8	6	4-1/2	1-1/2	3/8	2-1/8	5-1/4
3	15-5/8	7-5/8	2-5/8	6-7/8	1-1/8	2-1/4	4	6-1/8	-	1-1/8	6	4-1/2	1-1/2	1/2	2-1/8	5-1/4
4	18-3/4	8-1/2	3-1/4	8-3/8	1-1/4	2-3/4	4-3/4	8-1/8	1/8	1-3/8	8	6-3/8	2	5/8	2-5/8	6-1/8
5	18-3/4	8-1/2	3-1/4	8-5/8	1-1/4	3	5-1/2	8-1/8	1/8	1-3/8	8	6-3/8	2	5/8	2-5/8	6-1/8
6	18-3/4	8-1/2	3-1/4	8-5/8	1-1/4	3	5-1/2	8-1/8	1/8	1-3/8	8	6-3/8	2	5/8	2-5/8	6-1/8
8	23-5/8	10-5/8	3-7/8	10-5/8	1-3/8	3-1/2	6-1/2	9	1/8	1-11/16	10	8-1/4	2-1/2	3/4	3-1/4	6-7/8
10	23-5/8	10-5/8	3-7/8	11-1/8	1-3/8	4-1/2	8	9	1/8	1-11/16	10	8-1/4	2-1/2	1	3-1/4	6-7/8
12	23-5/8	10-5/8	3-7/8	11-1/8	1-3/8	4-1/2	8	9	1/8	1-11/16	10	8-1/4	2-1/2	1	3-1/4	6-7/8
16	28	12	4-3/4	13-3/4	1-7/16	4	9	10-11/16	1/4	1-3/4	11-11/16	9-3/4	3-1/4	1-1/4	4-5/8	7-5/8
20	28	12	4-3/4	16-3/4	1-7/16	4-1/2	10	10-11/16	1/4	1-3/4	11-11/16	9-3/4	3-1/4	1-1/4	4-5/8	7-5/8
25	28-1/4	14	5-7/8	16-3/4	2-1/8	4	10	14-1/2	5/16	2	13-1/2	11-3/4	3-1/4	1-3/4	7	8-1/4

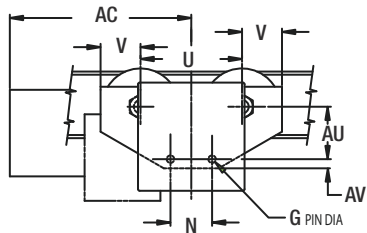
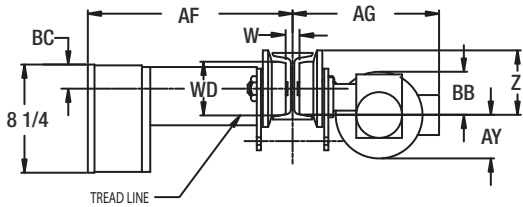
Note: For wide flange beam adaptation, patented track or for beams larger than standard consult factory. For geared trolley weight is shown less chain. 8ft standard zinc plated hand chain drop on geared trolley. Specify curve on order

# Motor Driven Trolley

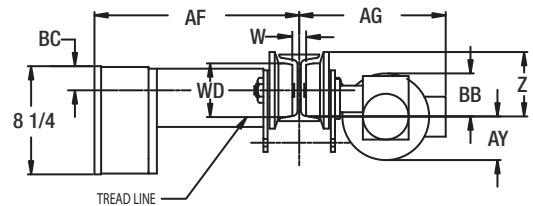


- Steel frame side plates extend beyond the wheels for end stop contacts. Side plates have tapped holes for collector bracket attachment. Optional safety drop stops and bumpers.
- Wheels are forged heat-treated steel with contour tread for use on American Standard I-beam or wide flange beams.
- Traverse motor is 30-minute rated, totally enclosed non-ventilated with class “F” insulation and TAS as standard.
- Traverse gearing is housed in a heavy duty right angle drive reducer with output pinion meshing with machine cut wheel gears.
- Trolley controls are housed in a NEMA 1 enclosed panel mounted on the trolley side for easy access. The controls include a reversing contractor, terminal strip and NEMA 4X pendant station with hoist and trolley push-button controls as standard.

## 1/4 to 1 & 2 ton

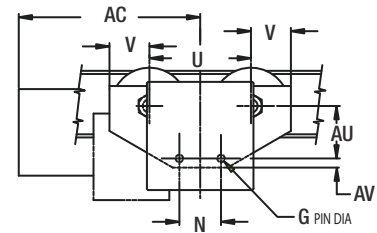


## 3 ton



## Specifications & Dimensions

Capacity	Model #	Standard Width Adjustment	Optional Flange Extended Adjustment		Trolley Speed	Optional Standard Speeds	Special Speed	Motor
			1st Extension	2nd Extension				
1/4 to 1	MDT01	3 to 5	5-1/8 to 7-1/4	7-1/2 to 9-1/8	75	50 & 100	25, 150	1/4
2	MDT02	3-5/8 to 6	6-1/4 to 8-5/8	8-7/8 to 11-1/4	60	40 & 80	30, 120	1/4
3	MDT03	4 to 6-1/4	6-3/8 to 8-5/8	8-3/4 to 11	50	75 & 100	25, 125	1/4



Capacity	Model #	AC	AF Max	AG Max	AU	AV	AY	BB Max	BC	G Dia	N	U	V	Z	WD	Min Radius
tons		in	in	in	in	in	in	in	in	in	in	in	in	in	in	ft.
1/4 to 1	MDT01	12	16-7/8	12-1/2	3-7/8	3/4	2-9/16	3-1/8	1-13/16	5/8	3-1/8	7-3/4	3	4-7/8	4	3
2	MDT02	12	16-7/8	12-1/2	4-1/8	1-15/16	1-15/16	2-1/16	2-7/16	1	5	9-1/8	3	4-7/8	4	5
3	MDT03	13-1/2	16-13/16	5-7/8	4-1/2	1-3/8	-	-	2-1/8	1-1/4	6	9-1/8	3-1/4	4-7/8	4	5

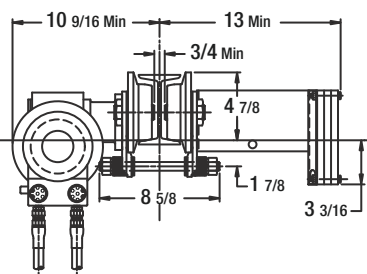
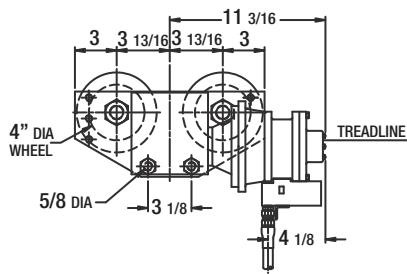
Always specify voltage when ordering. Voltages available: 115/230-1-60, 208-230/460-3-60, 575-3-60  
 115/230-1-60 is not available on trolleys for two speed hoists or two speed trolley.  
 Two speed trolleys have a 3:1 speed ratio. Standard pendant drop from trolley is 7 feet. Longer cables are available.  
 Trolleys are equipped with 3-foot length power supply cable. Longer lengths are available.



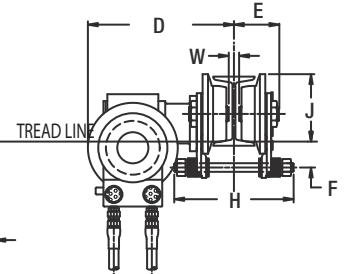
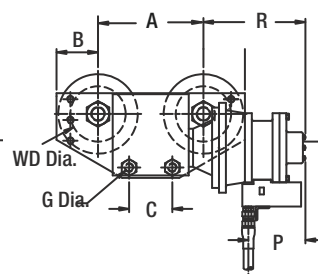


- Steel frame side plates extend beyond the wheels for end stop contacts. Side plates have tapped holes for optional safety drop stops & bumpers.
- Wheels are forged heat-treated steel with contoured tread for use on American Standard tapered or wide flange beams.
- Wheel bearings are sealed lifetime lubricated precision ball bearings
- Traverse gear reducer is rugged right angle drive reducer with output pinion meshing with machine cut wheel gears. The drive units are shipped with high-grade synthesized hydrocarbon oil for excellent gear protection and wide temperature range capacities.
- Eight vane air motor provides high torque, smooth starting and excellent control.
- Pendant throttle control provides precise, controlled spotting and efficient load handling.
- Spark resistant models are available for those areas where protection is needed in a hazardous environment. They contain all the same features except for the introduction of a spark resistant bronze wheel.
- Air consumption: 50 SCFM, Air pressure recommended: 90 PSI

## Series 2200



## Series 6000



## Specifications & Dimensions

Capacity	Model #	Flange Width Adjustment	Inverse Speed	A	B	C	Max D	Max E	Min F	Dia G	H	Max J	Max L
tons		in	FPM	in	in	in	in	in	in	in	in	in	in
<b>Standard Trolleys</b>													
1/4, 1/2, 1	911706	3 to 5	50	7-5/8	3	3-1/8	11-9/16	4-1/2	1-7/16	5/8	8-7/8	5-1/8	3-11/16
2	911707	3-5/8 to 6	60	9-1/8	3	5	12-1/16	5	1-5/8	1	9-1/2	5-3/16	3-5/8
3	911708	4 to 6-1/4	60	9-1/8	3-1/4	6	12-1/2	5	1-7/8	1-1/4	12	5-5/8	3-1/2
<b>Spark Resistant Trolleys</b>													
3/8, 1/2, 3/4	911710	3 to 5	50	7-5/8	3	3-1/8	11-9/16	4-1/2	1-7/16	5/8	8-7/8	5-1/8	3-11/16
1	911711	3-5/8 to 6	60	9-1/8	3	5	12-1/16	5	1-5/8	1	9-1/2	5-3/16	3-5/8
2	911712	4 to 6-1/4	60	9-1/8	3-1/4	6	12-1/2	5	1-7/8	1-1/4	12	5-5/8	3-1/2

Capacity	Model #	P	R	Min W	WD	Min Radius	Min Beam Depth	Flange Adjustment			Net Weight
								Standard	1st Extension	2nd Extension	
		in	in	in	in	in	in	in	in	in	
<b>Standard Trolleys</b>											
1/4, 1/2, 1	911706	4-1/8	7-3/8	1/2	4	3'-0"	6	3 to 5	5-1/8 to 7-1/4	7-1/2 to 9-1/8	95
2	911707	4-1/8	6-5/8	1-1/16	4	5'-0"	7	3-5/8 to 6	6-1/4 to 8-5/8	8-7/8 to 11-1/4	105
3	911708	4-1/8	6-5/8	1-3/8	4	5'-0"	8	4 to 6-1/4	6-3/8 to 8-5/8	8-3/4 to 11	150
<b>Spark Resistant Trolleys</b>											
3/8, 1/2, 3/4	911710	4-1/8	7-3/8	1/2	4	3'-0"	6	3 to 5	5-1/8 to 7-1/4	7-1/2 to 9-1/8	95
1	911711	4-1/8	6-5/8	1-1/16	4	5'-0"	7	3-5/8 to 6	6-1/4 to 8-5/8	8-7/8 to 11-1/4	105
2	911712	4-1/8	6-5/8	1-3/8	4	5'-0"	8	4 to 6-1/4	6-3/8 to 8-5/8	8-3/4 to 11	150

Equipped with 7 foot pendant control hose.  
 Always specify the hoist catalog number that will operate with the trolley.  
 Models for patented track with narrow flat tread steel wheels are available.  
 Models with extended beam flange adjustment are available.