

SIEVERT

CRANE & HOIST

DIVISION OF SIEVERT ELECTRIC



Sievert Crane & Hoist is proud to offer customers all over the world a wide range of manufacturers to deliver the best products at the best prices, making Sievert the one stop shop for all your crane & hoist needs. We are the authorized dealers of lifting equipment, parts and accessories for the following (but not limited to):

HOISTS

Acco Lifting
Budgit
Chester
Coffing
Columbus McKinnon
David Round
Demag
Detroit
Electrolift
Harrington
Ingersoll-Rand
Robbins & Myers (R&M)
Shaw-Box
Stahl
Whiting
Yale

CRANES

Sievert Crane & Hoist
Abell Howe
Acco
Contrx
Gorbel Systems
Handling System
Harrington
Robbins & Myers
Spanco Systems
Thern Davit Cranes
Trambeam

ELECTRICAL & CONTROLS

Conductix
Drivecon
Duct-O-Bar
Electromotive
Power Electronics
Remtron
Telemotive

For all your lifting needs including New Equipment, Parts, Accessories, Refurbishment, Crane Inspection and Service please contact us at:

NEW EQUIPMENT SALES

1230 S. Hannah Avenue,
Forest Park, IL 60130
sales@sievertelectric.com
Office: (708) 771-1600
Mobile: (708) 878-2231
Fax: (708) 405-5180

PARTS

1230 S. Hannah Avenue,
Forest Park, IL 60130
parts@sievertelectric.com
Office: (708) 771-1600 ext. 647
Direct: (708) 435-5008
Fax: (708) 435-5018

SERVICE, REFURB & INSPECTION

1230 S. Hannah Avenue,
Forest Park, IL 60130
service@sievertelectric.com
Office: (708) 405-5154
Mobile: (708) 878-2226
Fax: (708) 405-5174

The first Budgit air hoist was introduced in 1958 in response to an industry need for an economical, high-performance air hoist. Constant improvements in design have kept Budgit air hoists ahead of changing industry demands.

Budgit Air Hoist Advantages



- **Precise Load Spotting**
Lifting and lowering speeds are continuously variable from zero to maximum.
- **Operates In Extreme Heat**
The air hoist motor is designed for operation under conditions of relatively high ambient temperatures without need for special protection.
- **Higher Speeds**
For applications where speed is a critical factor in production, Budgit air hoists provide very fast lowering speeds.
- **Free From Hazard of Electrical Shock**
Since compressed air is the power source, Budgit air hoists have a distinct advantage over electrical shock hazards especially in wet locations.
- **Spark Resistant Features**
Spark resistant options allow air hoists to be used in areas where danger of combustion or explosion from atmospheric conditions exist.
- **Easier To Maintain**
There are no contactors, transformers, motor windings, fuses, etc. that are typical in electric hoists that need to be checked or replaced. As long as air going into the air motor is good and lubrication is supplied to the air motor, the Budgit air hoist is very easy to maintain.



UNSURPASSED **VALUE** WITH A **BUDGIT**



- Die-cast aluminum frame - lightweight, rugged, holds shafts and bearings in close alignment
- Gearing - combination of precision cut, heat treated helical and spur gears for quiet, efficient operation
- Mechanical load brake - positive action, spring biased Weston type load brake holds the load and provides exact load spotting and control
- Overload protection - MANGUARD overload device protects against excessive overloads... clutch also acts at upper and lower limits
- Multi-vane rotary air motor - eight vanes provide high torque smooth operation, positive starting and excellent control
- Internal Muffler - reduces sound level
- Pendant control - pendant throttle handle is of the full flow design for excellent load spotting capabilities
- Throttle valve - precision throttle valves meter the air for smooth operation

Basic Hoist Data

Rated Loads

1,2, and 3-ton (Spark resistant models are rated at 1/2, 1 and 2-ton).

Air Pressure Recommended

90 PSI

Air Consumption

70 SCFM (full load-full speed) slow speed model;
80 SCFM (full load-full speed) fast speed model.

Pendant Control Hose

6 foot pendant hose standard for 10 foot lift hoist, longer hose assemblies up to 36 foot available.

Lift

10 foot lifts are standard. Additional lifts available.

Net Weight (Basic Hoist)

100 lbs.

Suspension

Hook or lug

Air Inlet Size

3/4 NPTF

Air Supply Hose Size

3/4 I.D. min.

Hook & Lug Suspension Specifications

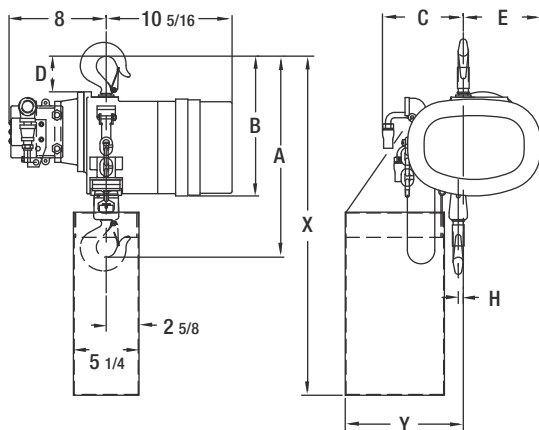
Capacity	Model	Hoist Catalog #	Full Load Lift Speed	Full Load Lowering Speed	Parts of Chain	Net Weight
tons			*FPM	*FPM		lbs.
1/2	Hook / Spark	911683	16	22	1	95
	Lug / Spark	911693				110
1	Hook / Standard	911644	13	18	1	93
		911641	30	42		95
	Hook / Spark	911684	8	11	2	112
		911654	13	18	1	106
	Lug / Standard	911651	30	42		108
		Lug / Spark	911694	8	11	2
2	Hook / Standard	911645	6	9	2	110
		911642	15	12		112
	Hook / Spark	911685	5	7	3	146
		911655	6	9	2	116
	Lug / Standard	911652	15	21		118
		Lug / Spark	911695	5	7	3
3	Hook / Standard	911646	4	6	3	144
		911643	10	14		146
	Lug / Standard	911656	4	6		164
		911653	10	14		166

*Hoist speeds based on 90 PSI line pressure with full rated hoist load

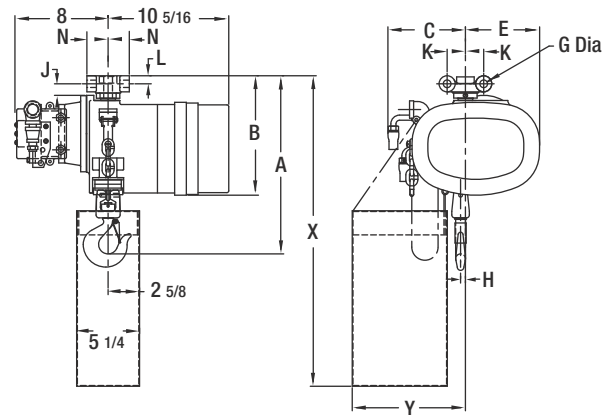
Hook Suspension Specifications & Dimensions

Capacity	Model	Hoist Catalog #	A	B	C	D	E	H	X	Y	
tons			in	in	in	in	in	in	in	in	
1/2	Hook / Spark	911683	16-1/2	11-7/16	6-5/8	2-15/16	6-3/8	7/16	27-13/16	9-11/16	
1	Hook / Standard	911644	16-1/2	11-17/16	6-5/8	2-15/16	6-3/8	7/16	27-13/16	9-11/16	
		911641									
2	Hook / Spark	911684	22	13-1/8	7-15/16	4-9/16	5-1/16	3/16	29-1/2	11	
		Hook / Standard	911645	22	13-1/8	7-15/16	4-9/16	5-1/16	3/16	29-1/2	11
			911642								
3	Hook / Spark	911685	24-7/8	14-3/8	9-3/8	5-7/8	7-1/8	1/4	30-3/4	12	
		Hook / Standard	911646	24-7/8	14-3/8	9-3/8	5-7/8	7-1/8	1/4	30-3/4	12
			911643								

Hook Suspension



Lug Suspension



Lug Suspension Specifications & Dimensions

Capacity	Model	Hoist Catalog #	B	C	E	J	K	L	M	N	G	H	X	Y	
tons			in	in	in	in	in	in	in	in	in	in	in	in	
1/2	Lug / Spark	911693	15-1/4	6-5/8	6-3/8	1	1-9/16	1-11/16	10-13/16	1-13/16	5/8	7/16	26-9/16	9-11/16	
1	Lug / Standard	911654	15-1/4	6-5/8	6-3/8	1	1-9/16	1-11/16	10-13/16	1-13/16	5/8	7/16	26-9/16	9-11/16	
		911651													
2	Lug / Spark	911694	21	7-15/16	5-1/16	1-11/16	2-1/2	1-7/8	11-1/8	2-3/16	1	3/16	27-1/2	11	
		Lug / Standard	911655	21	7-15/16	5-1/16	1-11/16	2-1/2	1-7/8	11-1/8	2-3/16	1	3/16	27-1/2	11
			911652												
3	Lug / Spark	911695	23-5/16	9-3/8	7-1/8	3-1/16	3	1-1/4	12-7/8	3	1-1/4	1/4	29-1/4	12	
		Lug / Standard	911656	23-5/16	9-3/8	7-1/8	3-1/16	3	1-1/4	12-7/8	3	1-1/4	1/4	29-1/4	12
			911653												

Spark Resistant Models

Spark resistant hoists offer greater protection in hazardous environments. Components for spark resistance includes bronze alloy hooks with stainless steel hook latches, lower blocks of stainless steel on single part chain and aluminum on 2 and 3 part chain, chrome nickel non-magnetic stainless steel alloy load chain, bronze limit stop with aluminum limit actuators and modified sprocket and guide. A spark resistant chain container is recommended on 10 foot lift spark resistant hoists. Spark resistant chain containers are stainless steel.

The spark resistant Series 6000 air hoists have lower speeds and are derated due to the use of stainless steel load chain. The lower wear life of stainless steel chain limits applications to medium duty service.

When specifying lug suspended spark resistant hoists, care must be taken in the trolley selection to assure that the trolley fits the derated hoist lug. If this is your first purchase, consult the factory for assistance.



- Pull cord control provides a lightweight, economical hoist for accurate control of loads
- Pendant throttle control hoists offer ergonomic one-handed controls, for ease of operation
- Inlet air swivel with built-in strainer provides free hoist movement
- Aluminum frame and end cover contributes to the lightweight, easily portable, and rugged design
- Heavy duty shoe type brake is a proven design for stopping and holding loads in heavy duty applications
- External adjustment screws for decreased lift and lower speeds
- External brake adjustment
- Limit stops prevent over-travel in upper and lowering directions
- Equa-torque gearing of alloy steel, heat treated spur gears is accurately machined to provide a close meshed, compact gear reduction
- Eight-vane motor provides high torque, smooth starting and excellent control
- Tapped exhaust port 1/2 NPTF... for clean applications or to add a supplemental muffler in addition to the built-in muffler for even quieter operation

Basic Hoist Data

Rated Loads
1/4, 1/2, and 1-ton
(Spark resistant models are rated at 3/8 and 3/4-ton).

Air Pressure Recommended
90 PSI

Air Consumption
48 SCFM at 90 PSI

Pendant Control Hose
6 foot length is standard. Longer lengths are an optional extra up to 72ft available.

Control
Pull cord or pendant throttle

Lift
10 foot lifts are standard. Additional lifts available.

Net Weight (Basic Hoist)
36 lbs.

Suspension
Hook or lug

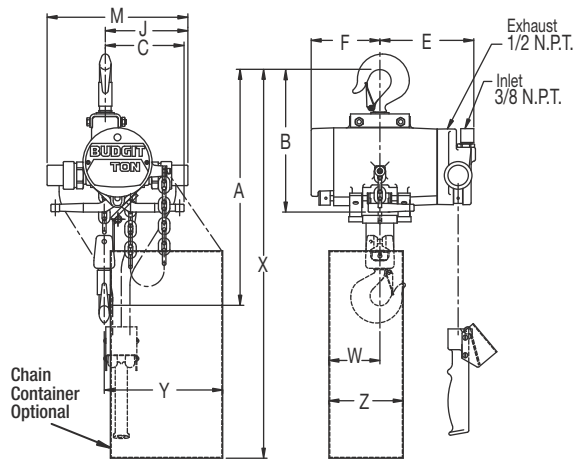
Air Inlet Size
3/8 NPTF

Air Supply Hose Size
1/2 I.D. min.

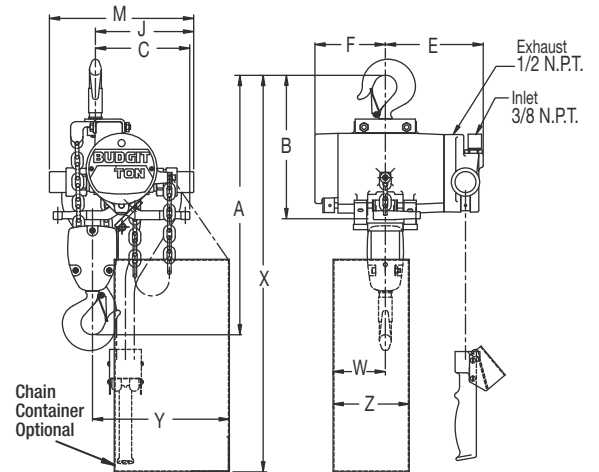
Air Exhaust
1/2 NPTF

Hook & Lug Suspension Specifications

Type	Capacity	Pull Cord Control		Pendant Throttle Control		Parts of Load Chain	Lifting Speed Max**	Lowering Speed Max**
		Model #	Net Weight	Model #	Net Weight			
tons	tons		lbs.		lbs.	in	in	in
Hook Mount Trolleys								
Standard Models								
Roller Chain	1/4	2201	37	2202	47	1	65	95
	1/2	2203	37	2204	47	1	45	120
	1	2205	51	2206	61	2	23	60
Link Chain	1/4	2211	36	2212	46	1	65	95
	1/2	2215	36	2216	46	1	45	120
	1	2219	49	2220	59	2	23	60
Spark Resistant Models								
Link Chain	3/8	2241	36	2242	46	1	60	100
	3/4	2243	49	2244	59	2	29	52
Lug Mount Trolleys								
Standard Models								
Link Chain	1/4	2251	36	2252	46	1	65	95
	1/2	2255	36	2256	46	1	45	120
	1	2259	49	2260	59	2	23	60
Spark Resistant Models								
Link Chain	3/8	2281	36	2282	46	1	60	100
	3/4	2283	49	2284	59	2	29	52



1/4 and 1/2 ton

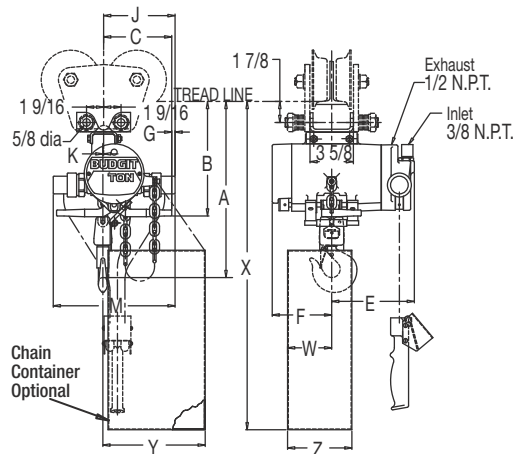


1 ton

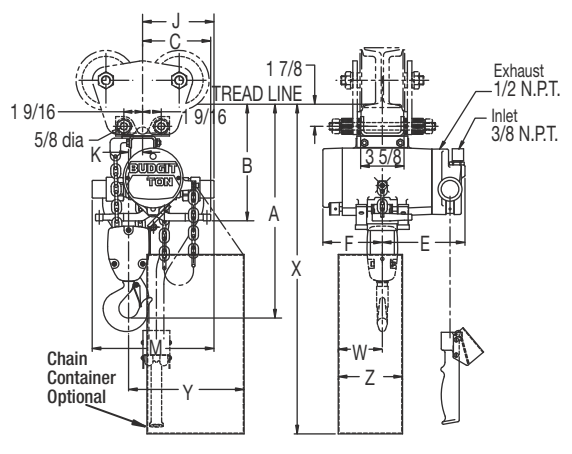
Hook Suspension Specifications & Dimensions

Type	Capacity	Pull Cord Control Model #	Pendant Throttle Control Model #	A	B	C	E	F	J	M	W	X	Y	Z	
tons	tons			in	in	in	in	in	in	in	in	in	in	in	
Standard Models															
Roller Chain	1/4	2201	2202	15-1/4	10-1/4	4-3/4	7-1/16	5-1/16	6-15/16	10-3/16	3-5/8	30-1/8	8-9/16	5-1/4	
	1/2	2203	2204	15-1/4	10-1/4	4-3/4	7-1/16	5-1/16	6-15/16	10-3/16	3-5/8	30-1/8	8-9/16	5-1/4	
	1	2205	2206	18	10-1/4	5-3/4	7-1/16	5-1/16	6-15/16	10-3/16	3-5/8	30-1/8	9-11/16	5-1/4	
Link Chain	1/4	2211	2212	15-1/4	10-1/4	4-3/4	7-1/16	5-1/16	6-15/16	10-3/16	3-5/8	30-1/8	8-9/16	5-1/4	
	1/2	2215	2216	15-1/4	10-1/4	4-3/4	7-1/16	5-1/16	6-15/16	10-3/16	3-5/8	30-1/8	8-9/16	5-1/4	
	1	2219	2220	18	10-1/4	5-3/4	7-1/16	5-1/16	6-15/16	10-3/16	3-5/8	30-1/8	9-11/16	5-1/4	
Spark Resistant Models															
Link Chain	3/8	2241	2242	15-1/4	10-1/4	4-3/4	7-1/16	5-1/16	6-15/16	10-3/16	*	*	*	*	
	3/4	2243	2244	18	10-1/4	5-3/4	7-1/16	5-1/16	6-15/16	10-3/16	*	*	*	*	

* Spark resistant chain container dimensions can be found in the Air Hoist Accessories section of this brochure



1/4 and 1/2 ton



1 ton

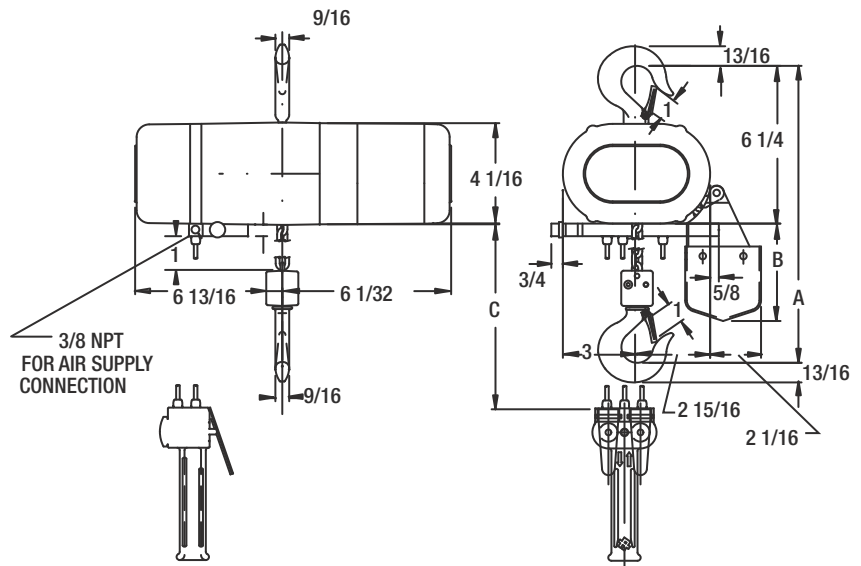
Lug Suspension Specifications & Dimensions

Type	Capacity	Pull Cord Control Model #	Pendant Throttle Control Model #	A	B	C	E	F	G	J	K	M	W	X	Y	Z
tons	tons			in	in	in	in	in	in	in	in	in	in	in	in	in
Standard Models																
Link Chain	1/4	2251	2252	13-7/8	9-5/8	4-3/4	7-1/16	5-1/16	1-1/4	6	1/16	10-3/16	3-5/8	29-1/4	8-9/16	5-1/4
	1/2	2255	2256	13-7/8	9-5/8	4-3/4	7-1/16	5-1/16	1-1/4	6	1/16	10-3/16	3-5/8	29-1/4	8-9/16	5-1/4
	1	2259	2260	17	9-3/4	5-3/4	7-1/16	5-1/16	1/4	6	1-3/16	10-3/16	3-5/8	29-1/4	9-11/16	5-1/4
Spark Resistant Models																
Link Chain	3/8	2281	2282	13-7/8	9-5/8	4-3/4	7-1/16	5-1/16	1-1/4	6	1/16	10-3/16	*	*	*	*
	3/4	2283	2284	17	9-3/4	5-3/4	7-1/16	5-1/16	1/4	6	1-3/16	10-3/16	*	*	*	*

* Spark resistant chain container dimensions can be found in the Air Hoist Accessories section of this brochure



- 10-pocket oblique-lay liftwheel provides longer chain life
- Epoxy powder coat finish is smooth and tough
- Double reduction gearing
- Variable flow, two-lever pendant for precise load spotting
- Threaded external exhaust for piping away exhaust in clean room or painting operations
- Rugged cast aluminum alloy hoist frame. Small, compact design for commercial and industrial applications
- Industrial-duty air motor for tough requirements
- Gear train is lifetime-lubricated with non-oxidizing grease
- Hardened, forged steel, latch-style lower hook rotates 360°. Upper hook provided with a positive load engagement.
- Chain bucket optional



Specifications & Dimensions

Capacity lbs.	Lift Speed FPM	Parts of Chain	Hoist Catalog Number	Headroom in	A in	B in	*C in	Shipping Weight lbs.
250	0-31	1	931889	10-7/8	10-7/8	3-7/8	6'4"	30
300	0-31	1	931890	10-7/8	10-7/8	3-7/8	6'4"	30
500	0-21	1	931892	10-7/8	10-7/8	3-7/8	6'4"	30
500	0-16	2	931894	11-15/16	11-15/16	5-3/4	6'4"	34
600	0-16	2	931895	11-15/16	11-15/16	5-3/4	6'4"	34
1000	0-11	2	931897	11-15/16	11-15/16	5-3/4	6'4"	34

* Pendant drop is for 10' lift. Other lifts available.