

# BUDGIT®

INSTALLATION INSTRUCTIONS RETROFIT  
REPLACEMENT KIT BUDGIT® ELECTRIC  
HOIST AC BRAKE

Disconnect power source from hoist. Lock disconnect in the off position and tag to prevent accidental application of power.

Disconnect motor leads from the controls.

Remove brake.



Remove motor bolts and pull motor away from gear case as shown in illustration.

Pull two new 18-16 AWG stranded wire leads labeled "HB1" and "HB2" through the motor barrel and out the end bell as shown in illustration. The two wires should be approximately 24" longer than the motor barrel.

**SIEVERT**  
**CRANE & HOIST**  
DIVISION OF SIEVERT ELECTRIC

Authorized Sales and Service

(708) 771-1600

[parts@sievertelectric.com](mailto:parts@sievertelectric.com)

[www.sievertcrane.com](http://www.sievertcrane.com)



Reinstall motor, pulling wire leads through the gear case wire passage.

Install brake using provided hardware. (Do not use hardware provided with the DC brake).

- (2) NO2112 - 3/8-16 x 1" Hex socket head cap screw
- (2) 10095703 - 3/8" Lock-washer, socket head cap screw

At the brake end of the motor connect the DC brake leads together "1" and "1A" with a wire nut.

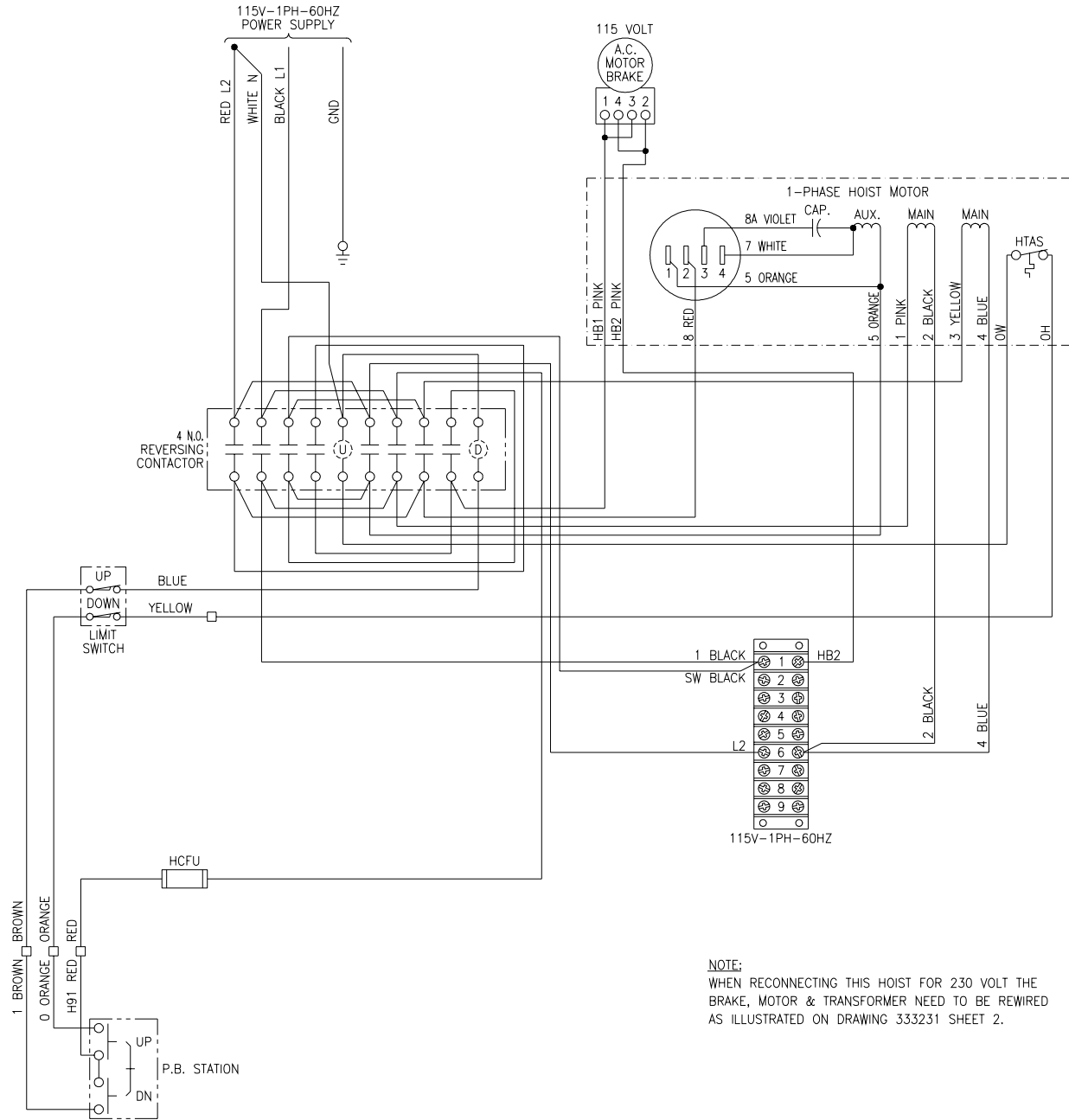
Remove reversing contactor and install provided contactor (4-normally open).

**Note:** 3-normally open-1-normally closed contactor will not function properly

Wire the hoist using the provided (3) 22700310 - 7.5" black wire jumpers and the appropriate wiring diagram.

- Sheet 2 - 115V single phase without transformer
- Sheet 3 - 230V single phase without transformer
- Sheet 4 - 115V single phase with transformer
- Sheet 5 - 230V single phase with transformer
- Sheet 6 - 230V three phase, single speed hoist
- Sheet 7 - 460V three phase, single speed hoist
- Sheet 8 - 200V or 575V three phase, single speed hoist
- Sheet 9 - All voltages, two speed hoist

Power unit and test per the procedure outlined in section 7-12, of the Operation, Parts, and Service Manual.

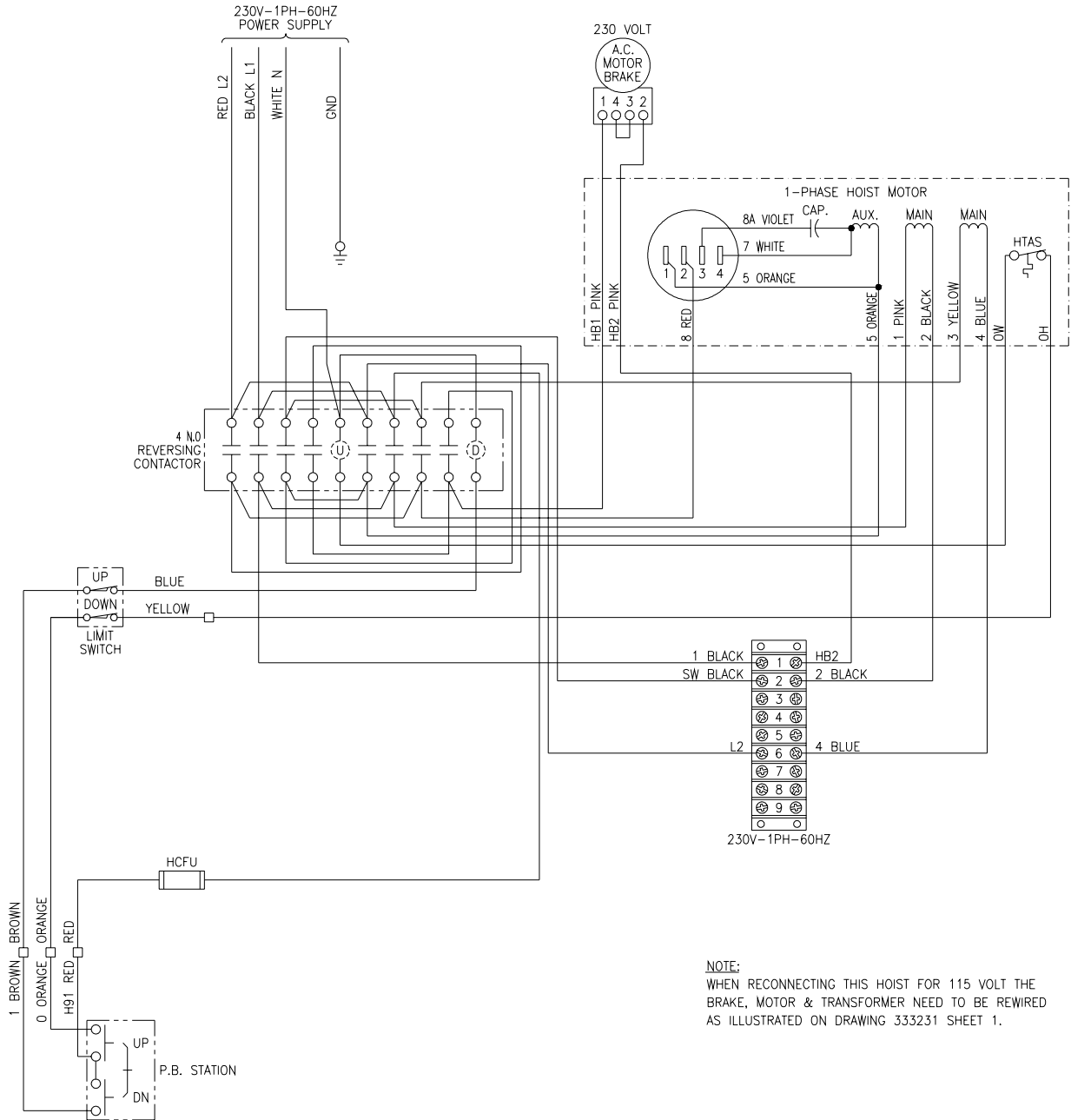


**NOTE:**  
WHEN RECONNECTING THIS HOIST FOR 230 VOLT THE BRAKE, MOTOR & TRANSFORMER NEED TO BE REWIRED AS ILLUSTRATED ON DRAWING 333231 SHEET 2.

**WARNING:**  
UNLESS HOOK RAISES WHEN "UP" BUTTON IS PRESSED SEVERE HOIST DAMAGE AND A DROPPED LOAD MAY RESULT. CORRECT IMPROPER HOOK DIRECTION BY INTERCHANGING MOTOR LEADS ORANGE (5) AND RED (8). DO NOT CHANGE PUSHBUTTON WIRING.

**WARNING:**  
THIS EQUIPMENT MUST BE EFFECTIVELY GROUNDED ACCORDING TO APPLICABLE CODES.

**AVERTISSEMENT:**  
CET EQUIPEMENT DOIT ETRE MIS A LA TERRE EN ACCORDANCE AVEC LES NORMES EN VIGUEUR.

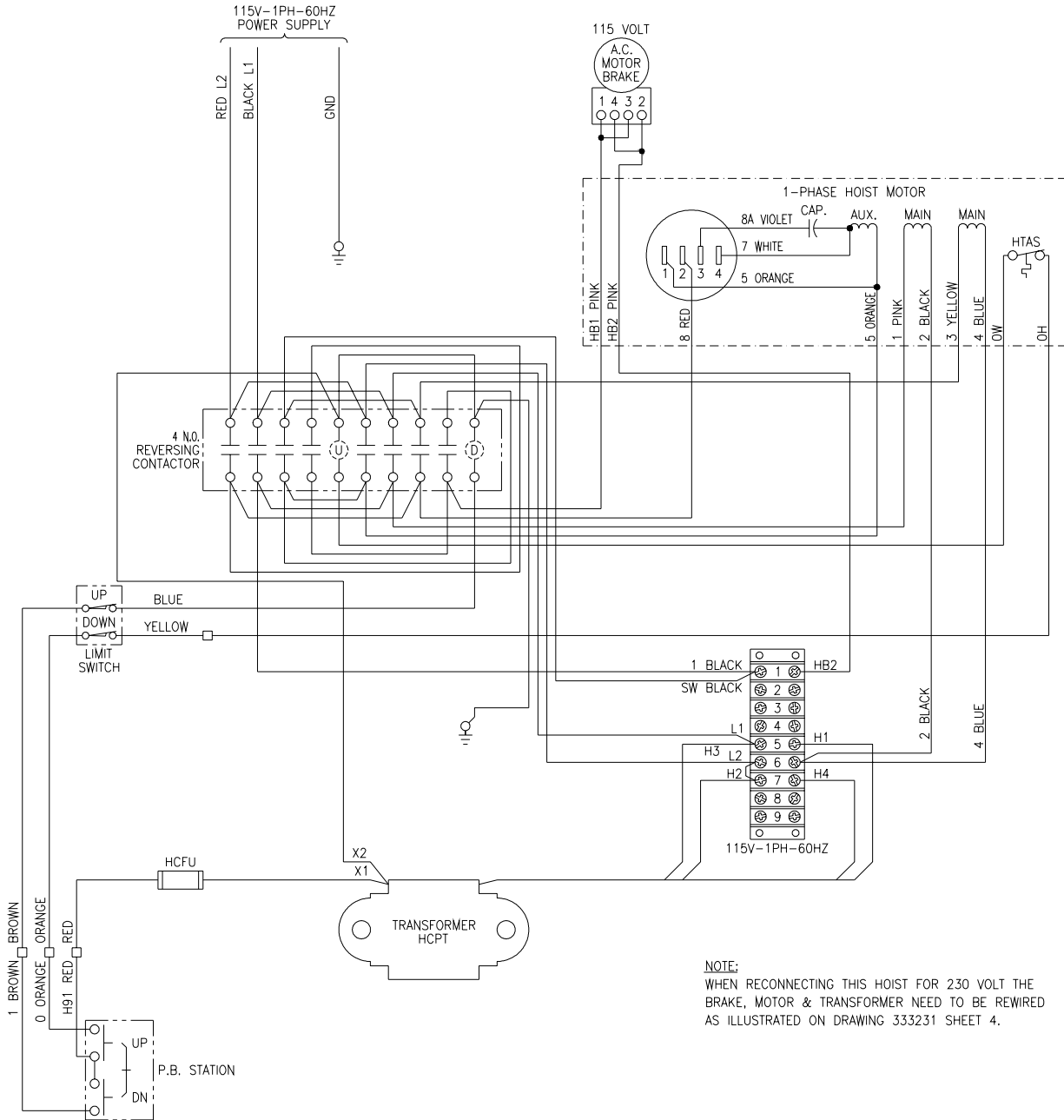


**NOTE:**  
 WHEN RECONNECTING THIS HOIST FOR 115 VOLT THE  
 BRAKE, MOTOR & TRANSFORMER NEED TO BE REWIRED  
 AS ILLUSTRATED ON DRAWING 333231 SHEET 1.

**▲WARNING:**  
 UNLESS HOOK RAISES WHEN "UP" BUTTON  
 IS PRESSED SEVERE HOIST DAMAGE AND A  
 DROPPED LOAD MAY RESULT.  
 CORRECT IMPROPER HOOK DIRECTION BY  
 INTERCHANGING MOTOR LEADS ORANGE (5)  
 AND RED (8).  
 DO NOT CHANGE PUSHBUTTON WIRING.

**▲WARNING:**  
 THIS EQUIPMENT MUST BE EFFECTIVELY  
 GROUNDED ACCORDING TO APPLICABLE  
 CODES.

**▲AVERTISSEMENT:**  
 CET EQUIPEMENT DOIT ETRE MIS A'LA TERRE  
 EN ACCORDANCE AVEC LES NORMES EN  
 VIGUEUR.

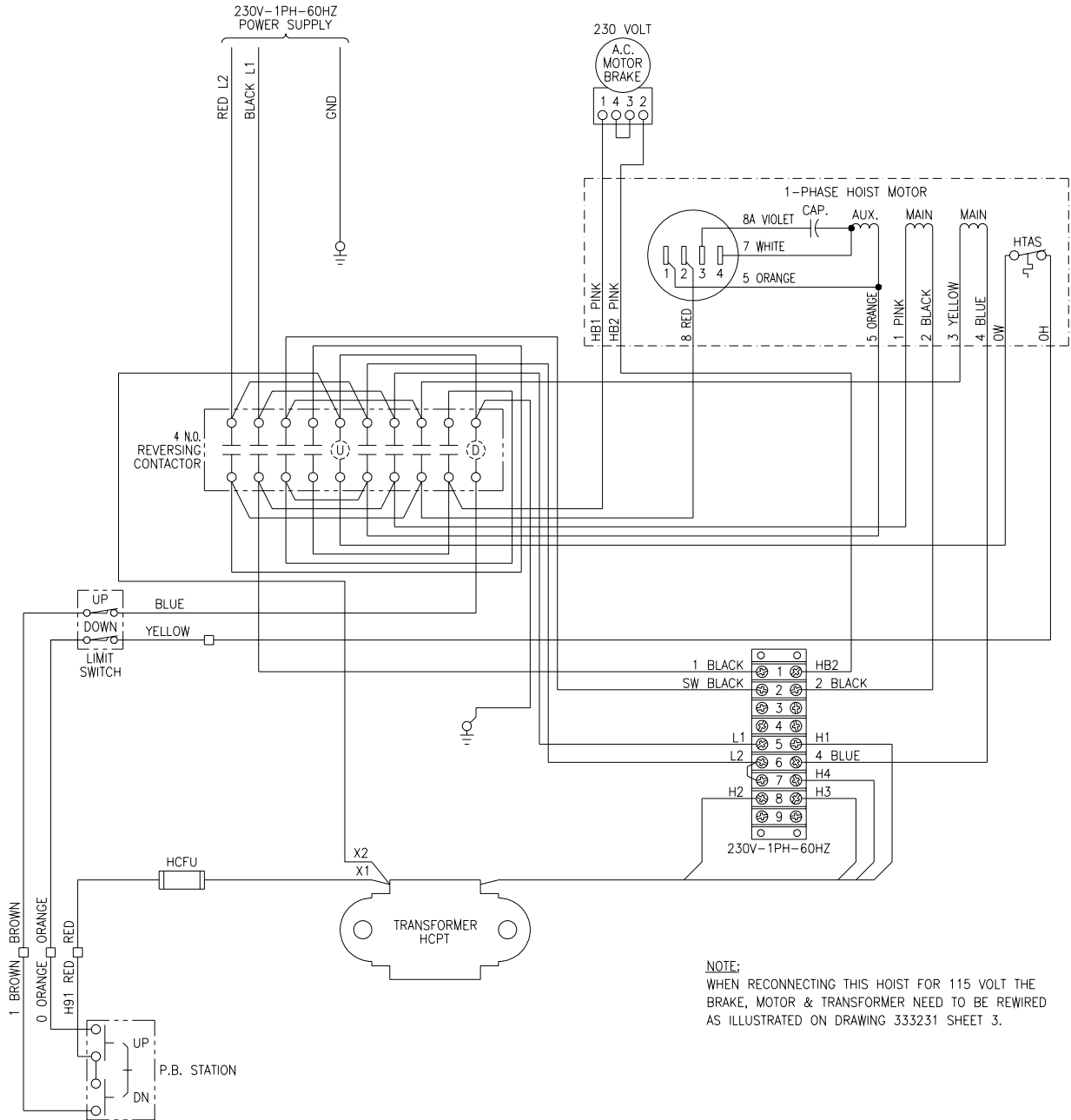


NOTE:  
 WHEN RECONNECTING THIS HOIST FOR 230 VOLT THE  
 BRAKE, MOTOR & TRANSFORMER NEED TO BE REWIRED  
 AS ILLUSTRATED ON DRAWING 333231 SHEET 4.

**WARNING:**  
 UNLESS HOOK RAISES WHEN "UP" BUTTON  
 IS PRESSED SEVERE HOIST DAMAGE AND A  
 DROPPED LOAD MAY RESULT.  
 CORRECT IMPROPER HOOK DIRECTION BY  
 INTERCHANGING MOTOR LEADS ORANGE (5)  
 AND RED (8).  
 DO NOT CHANGE PUSHBUTTON WIRING.

**WARNING:**  
 THIS EQUIPMENT MUST BE EFFECTIVELY  
 GROUNDED ACCORDING TO APPLICABLE  
 CODES.

**AVERTISSEMENT:**  
 CET EQUIPMENT DOIT ETRE MIS A LA TERRE  
 EN ACCORDANCE AVEC LES NORMES EN  
 VIGUEUR.

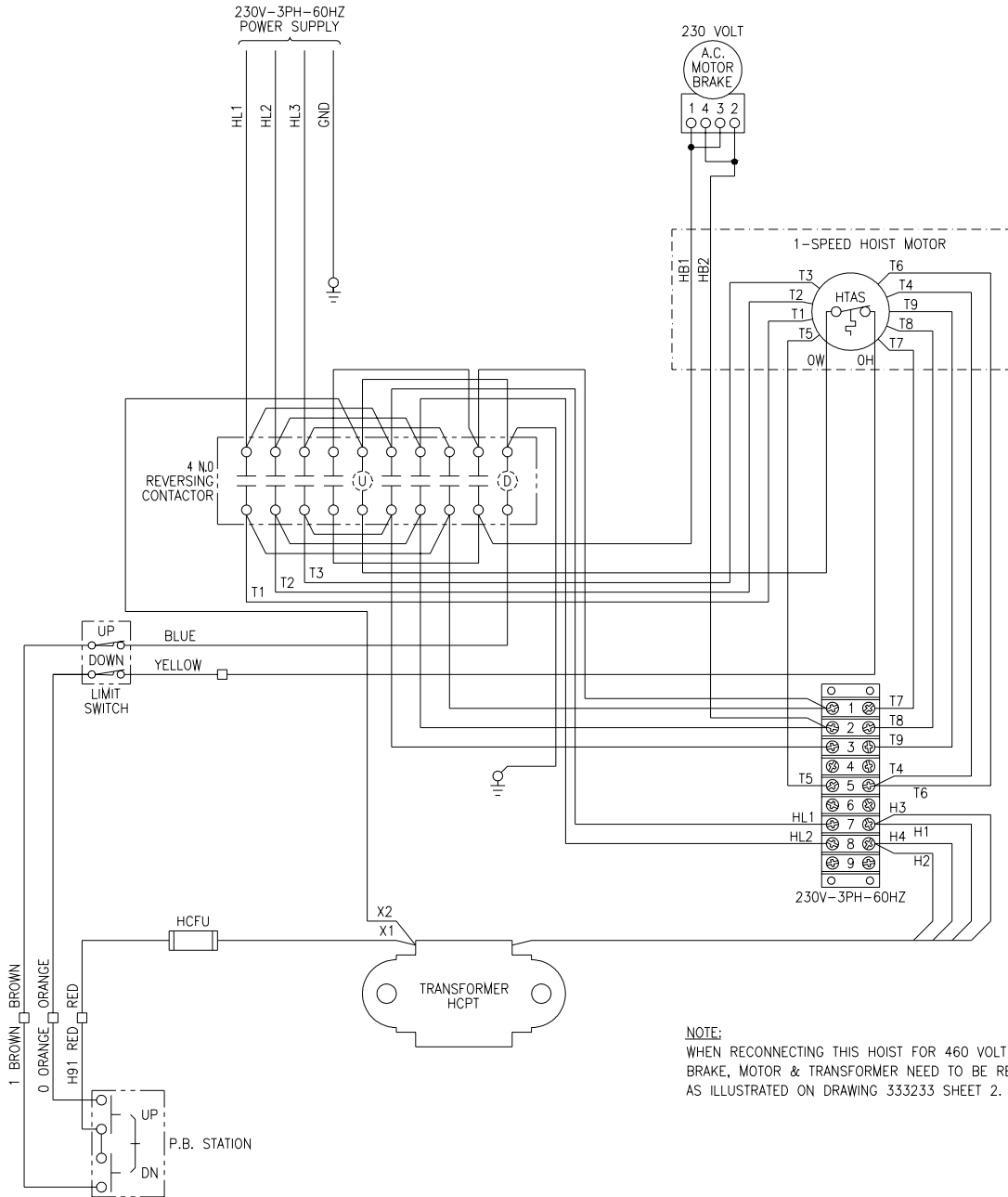


**NOTE:**  
 WHEN RECONNECTING THIS HOIST FOR 115 VOLT THE  
 BRAKE, MOTOR & TRANSFORMER NEED TO BE REWIRED  
 AS ILLUSTRATED ON DRAWING 333231 SHEET 3.

**▲WARNING:**  
 UNLESS HOOK RAISES WHEN "UP" BUTTON  
 IS PRESSED SEVERE HOIST DAMAGE AND A  
 DROPPED LOAD MAY RESULT.  
 CORRECT IMPROPER HOOK DIRECTION BY  
 INTERCHANGING MOTOR LEADS ORANGE (5)  
 AND RED (8).  
 DO NOT CHANGE PUSHBUTTON WIRING.

**▲WARNING:**  
 THIS EQUIPMENT MUST BE EFFECTIVELY  
 GROUNDED ACCORDING TO APPLICABLE  
 CODES.

**▲AVERTISSEMENT:**  
 CET EQUIPEMENT DOIT ETRE MIS A'LA TERRE  
 EN ACCORDANCE AVEC LES NORMES EN  
 VIGUEUR.

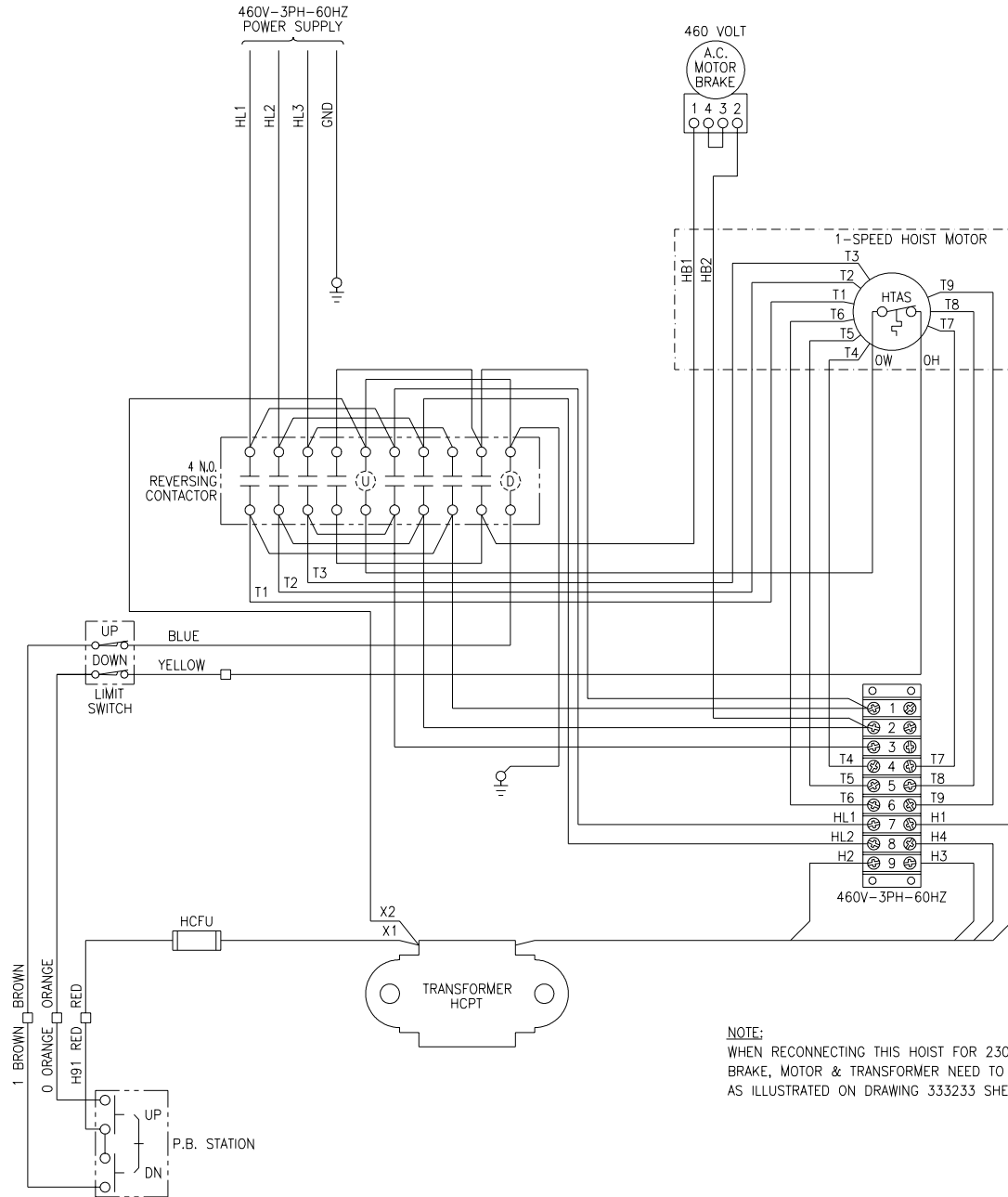


NOTE:  
 WHEN RECONNECTING THIS HOIST FOR 460 VOLT THE  
 BRAKE, MOTOR & TRANSFORMER NEED TO BE REWIRED  
 AS ILLUSTRATED ON DRAWING 333233 SHEET 2.

**▲WARNING:**  
 UNLESS HOOK RAISES WHEN "UP" BUTTON  
 IS PRESSED SEVERE HOIST DAMAGE AND A  
 DROPPED LOAD MAY RESULT.  
 CORRECT IMPROPER HOOK DIRECTION BY  
 INTERCHANGING INPUT POWER L1 AND L3  
 DO NOT CHANGE PUSHBUTTON WIRING.

**▲WARNING:**  
 THIS EQUIPMENT MUST BE EFFECTIVELY  
 GROUNDED ACCORDING TO APPLICABLE  
 CODES.

**▲AVERTISSEMENT:**  
 CET EQUIPMENT DOIT ETRE MIS A'LA TERRE  
 EN ACCORDANCE AVEC LES NORMES EN  
 VIGUEUR.

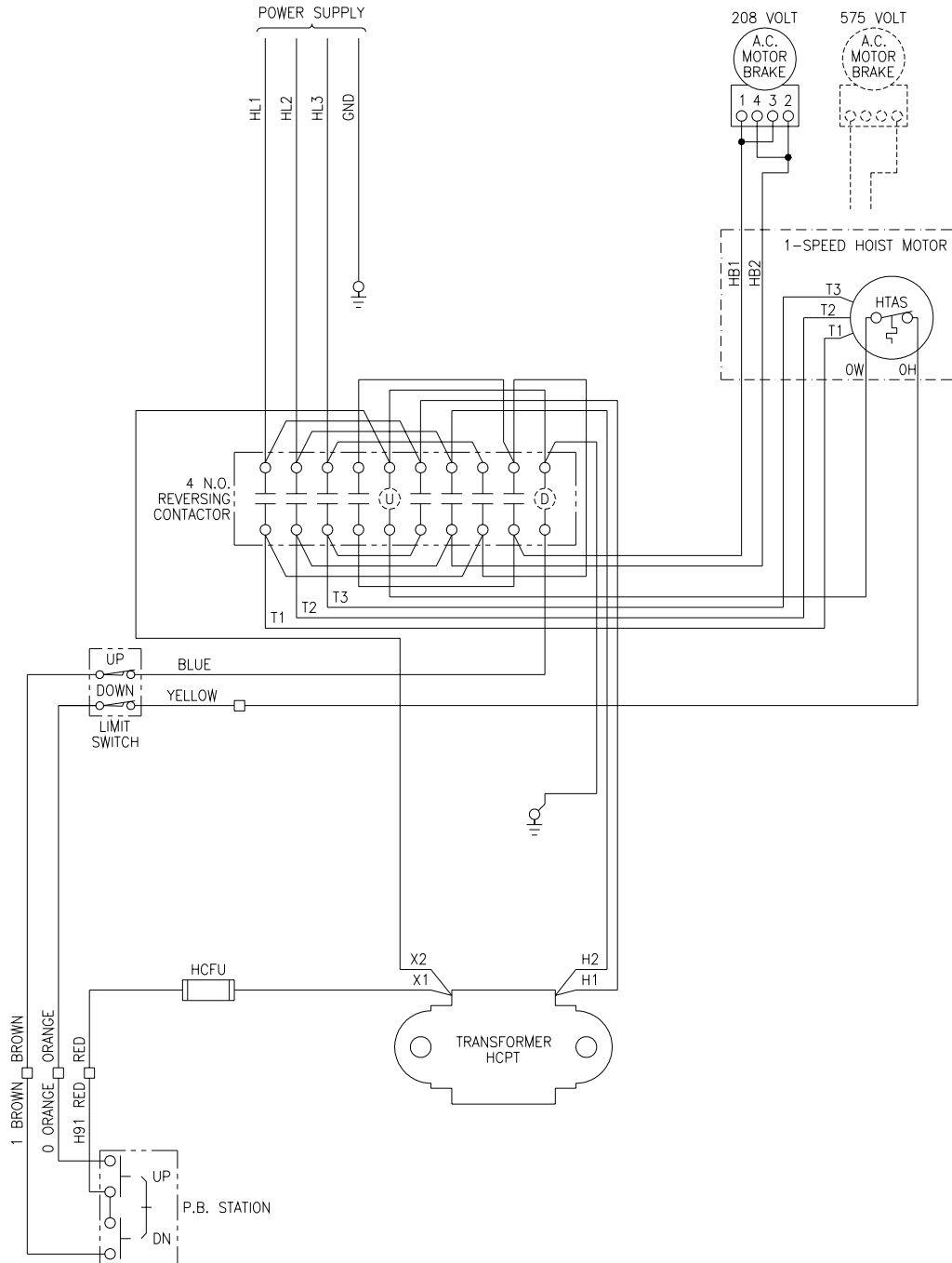


**NOTE:**  
 WHEN RECONNECTING THIS HOIST FOR 230 VOLT THE  
 BRAKE, MOTOR & TRANSFORMER NEED TO BE REWIRED  
 AS ILLUSTRATED ON DRAWING 333233 SHEET 1

**▲WARNING:**  
 UNLESS HOOK RAISES WHEN "UP" BUTTON  
 IS PRESSED SEVERE HOIST DAMAGE AND A  
 DROPPED LOAD MAY RESULT.  
 CORRECT IMPROPER HOOK DIRECTION BY  
 INTERCHANGING INPUT POWER L1 AND L3  
 DO NOT CHANGE PUSHBUTTON WIRING.

**▲WARNING:**  
 THIS EQUIPMENT MUST BE EFFECTIVELY  
 GROUNDED ACCORDING TO APPLICABLE  
 CODES.

**▲AVERTISSEMENT:**  
 CET EQUIPEMENT DOIT ETRE MIS A LA TERRE  
 EN ACCORDANCE AVEC LES NORMES EN  
 VIGUEUR.



**▲WARNING:**

UNLESS HOOK RAISES WHEN "UP" BUTTON IS PRESSED SEVERE HOIST DAMAGE AND A DROPPED LOAD MAY RESULT. CORRECT IMPROPER HOOK DIRECTION BY INTERCHANGING INPUT POWER L1 AND L3 DO NOT CHANGE PUSHBUTTON WIRING.

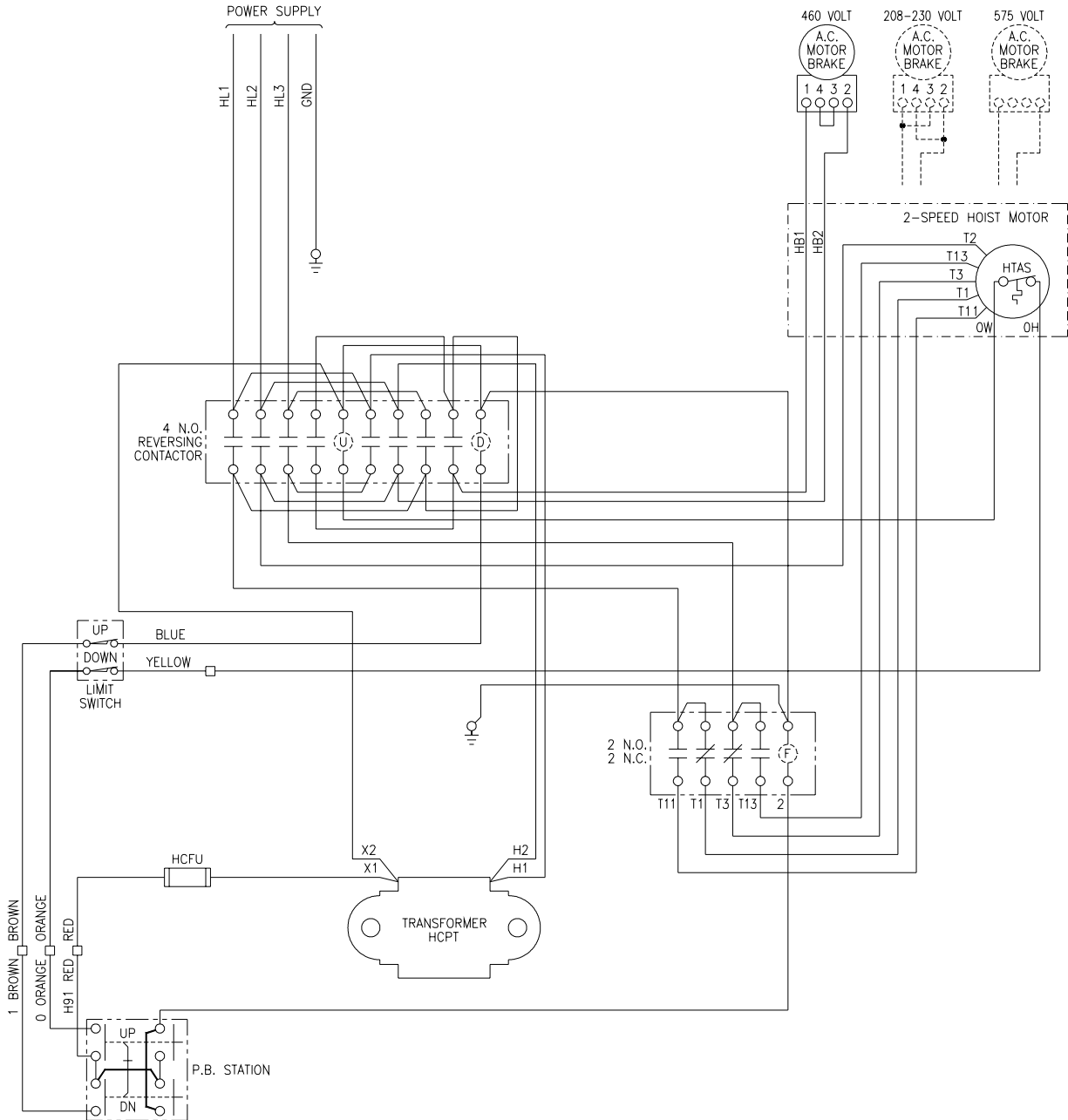
**▲WARNING:**

THIS EQUIPMENT MUST BE EFFECTIVELY GROUNDED ACCORDING TO APPLICABLE CODES.

**▲AVERTISSEMENT:**

CET EQUIPEMENT DOIT ETRE MIS A'LA TERRE EN ACCORDANCE AVEC LES NORMES EN VIGUEUR.





- ▲ **WARNING:**  
UNLESS HOOK RAISES WHEN "UP" BUTTON IS PRESSED SEVERE HOIST DAMAGE AND A DROPPED LOAD MAY RESULT. CORRECT IMPROPER HOOK DIRECTION BY INTERCHANGING INPUT POWER L1 AND L3 DO NOT CHANGE PUSHBUTTON WIRING.
- ▲ **WARNING:**  
THIS EQUIPMENT MUST BE EFFECTIVELY GROUNDED ACCORDING TO APPLICABLE CODES.
- ▲ **AVERTISSEMENT:**  
CET EQUIPMENT DOIT ETRE MIS A'LA TERRE EN ACCORDANCE AVEC LES NORMES EN VIGUEUR.





## BUDGIT<sup>®</sup>

414 West Broadway Ave.  
P.O. Box 769  
Muskegon, Michigan 49443-0769  
(800) 955-5541  
(800) 742-9270 FAX

Printed in U.S.A. / Copyright 2007, Lift-Tech International, division of Columbus McKinnon Corporation

[For more information contact: Sievert Crane and Hoist, \(708\) 771-1600, parts@sievertelectric.com, www.sievertcrane.com](#)